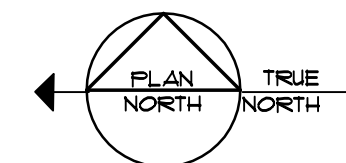
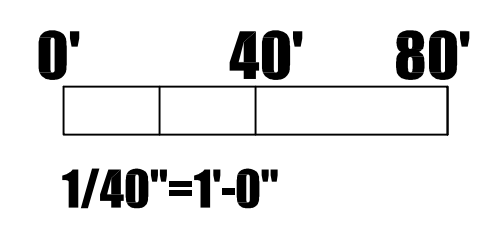


### TABULATION

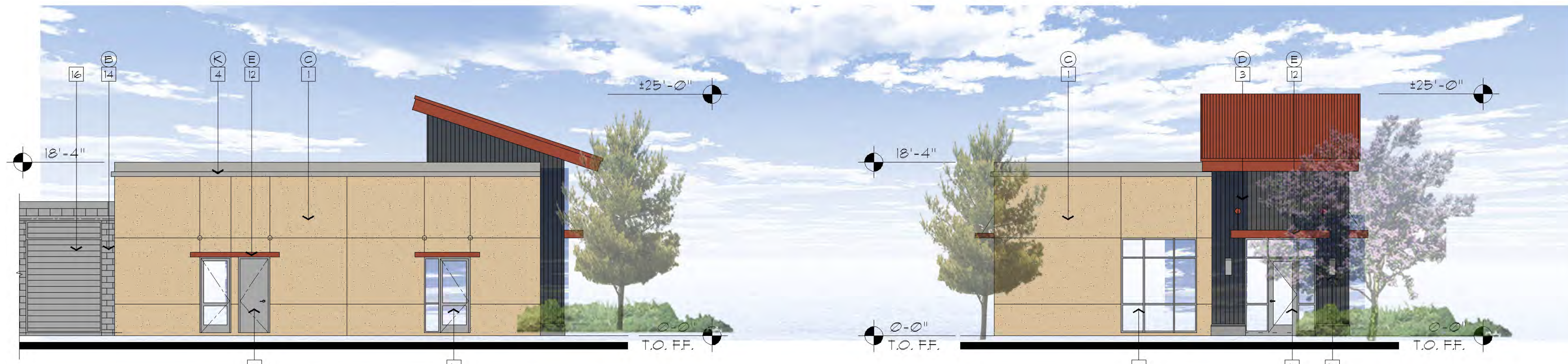
<b>SITE</b>	<b>254,826 SF (5.85 AC)</b>
<b>STORAGE</b>	<b>25,050 SF</b>
<b>OFFICE</b>	<b>1,575 SF</b>
<b>TOTAL BUILDING</b>	<b>= 26,625 SF</b>
<b>FAR</b>	<b>10.44 %</b>
<b>COVERED RV/ BOAT (163 SPACES)</b>	<b>96,700 SF</b>
<b>PARKING (OFFICE)</b>	<b>6 STALLS</b>



# PC Exhibit C



**EAST ELEVATION - ATKINSON STREET**



**WEST ELEVATION**

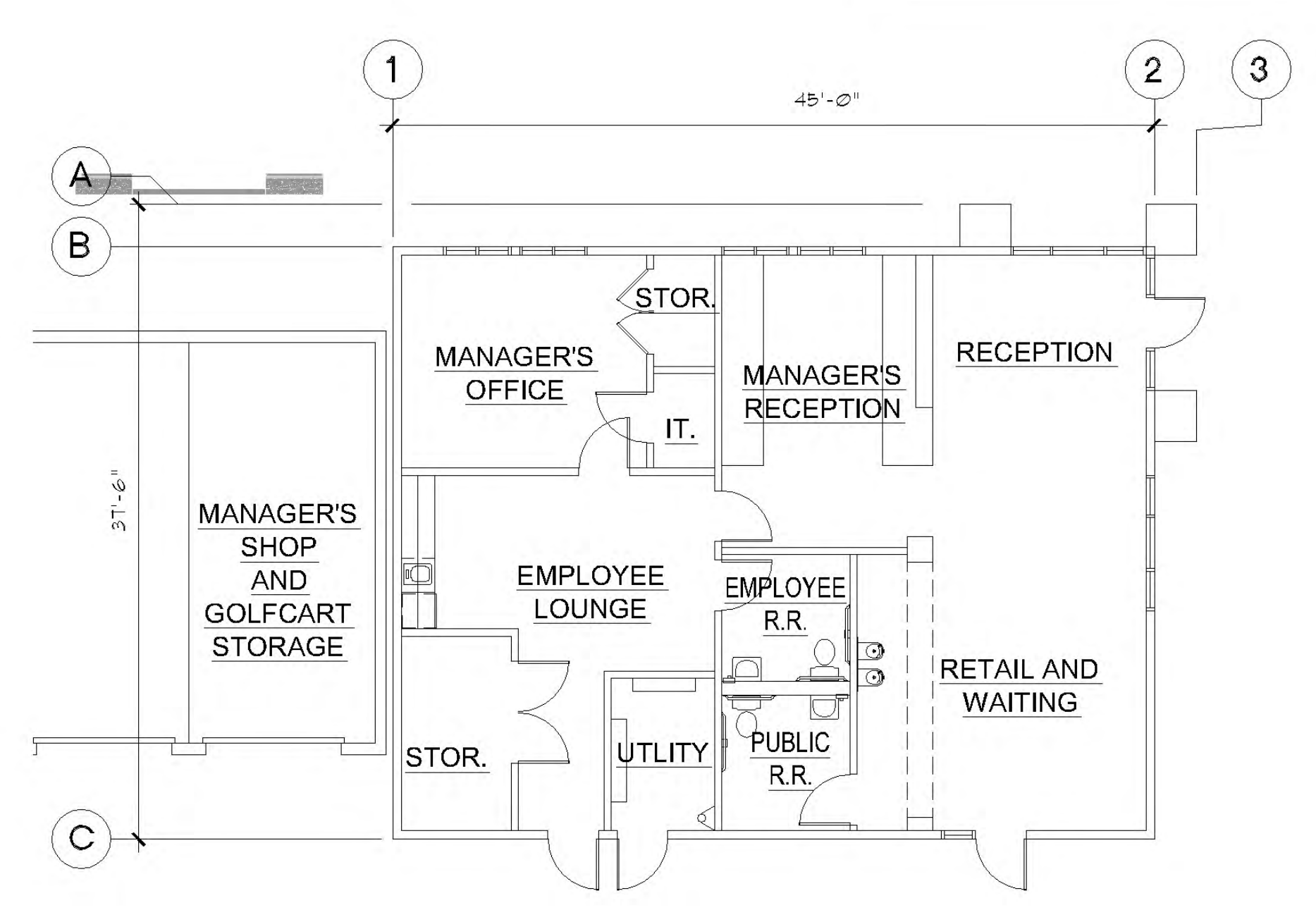
**SOUTH ELEVATION**

### KEYNOTES

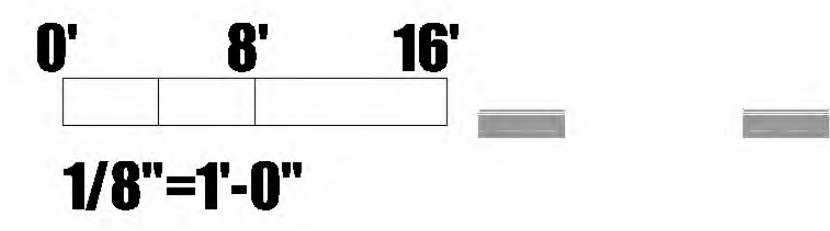
1	PLASTER WALL
2	METAL ROOFING
3	METAL SIDING
4	FOAM PARAPET CAP
5	ALUMINUM STOREFRONT DOOR
6	WROUGHT IRON SLIDING GATE
7	WROUGHT IRON FENCE
8	HOLLOW METAL DOOR
9	CLEAR GLAZING SET IN ALUMINUM STOREFRONT WINDOW SYSTEM
10	HORIZONTAL / VERTICAL REVEAL
11	METAL LATTICE WORK
12	METAL AWNING
13	GARAGE DOOR
14	BLOCK WALL
15	BLOCK WALL FILASTER WITH PLASTER FINISH
16	OVERHEAD DOOR
17	CONCRETE BASE
18	ACCENT LIGHTING

### FINISH SCHEDULE

A	FIELD CMU BLOCK WALL - BASALITE 621, SPLIT FACE
B	ACCENT CMU BLOCK WALL - BASALITE 621, GROUND FACE
C	DEC139 GOLDEN GATE
D	METAL SIDING, MINI-V-BEAM META ROOF PANEL, COOL MIDNIGHT BRONZE 5R1; 21 - LRV:1 - GA:24422
E	METAL ROOF / SLOPED METAL CANOPY, MINI-V-BEAM META ROOF PANEL, COOL TERRA-COTTA 5R1; 41 - LRV:5 - GA:24422
F	METAL FLAT AWNINGS, MINI-V-BEAM META ROOF PANEL, COOL MATTE BLACK 5R1; 29 - LRV:5 - GA:24422
G	WROUGHT IRON
H	BLACK ANODIZED ALUMINUM FRAME W/ CLEAR GLAZING
I	BLACK ANODIZED ALUMINUM
J	CONCRETE BASE - CLEAR SEALER
K	'GLIDDEN' SILVER SWORDPLAY 30BB 45/049



**MANAGER'S OFFICE - FLOOR PLAN - PHASE 1**



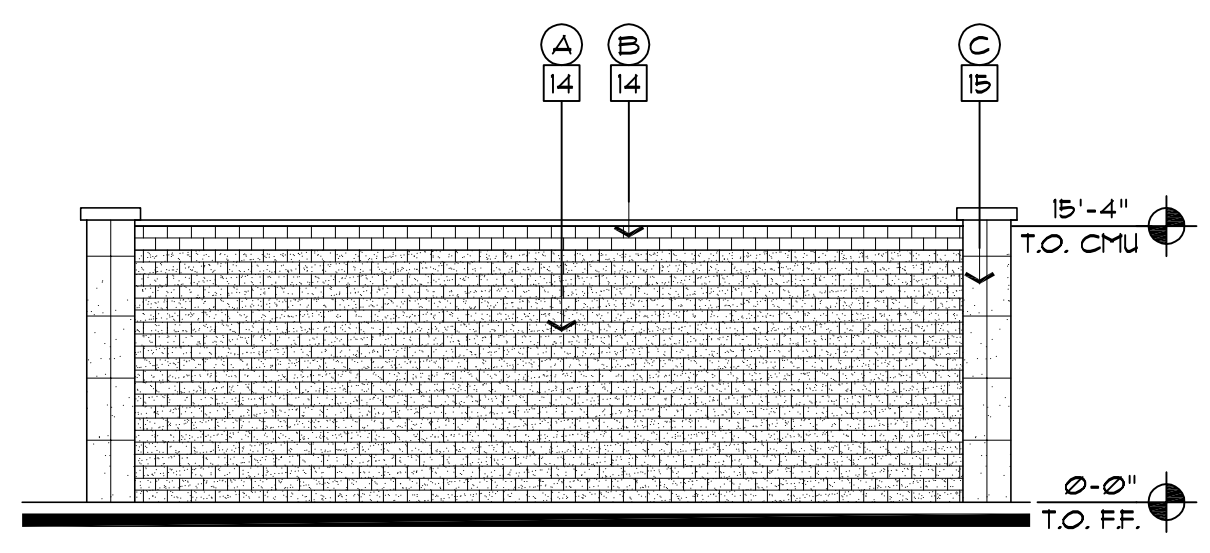
**Stark Designs**  
**ARCHITECTURE**  
 11.24  
 DATE: 11-9-20  
**P2**  
**ATKINSON SELF STORAGE AND RV/ BOAT**  
 ROSEVILLE, California  
 RDS, LLC  
 © 2018  
**PROPOSED MANAGER'S OFFICE ELEVATIONS + PLANS**

## KEYNOTES

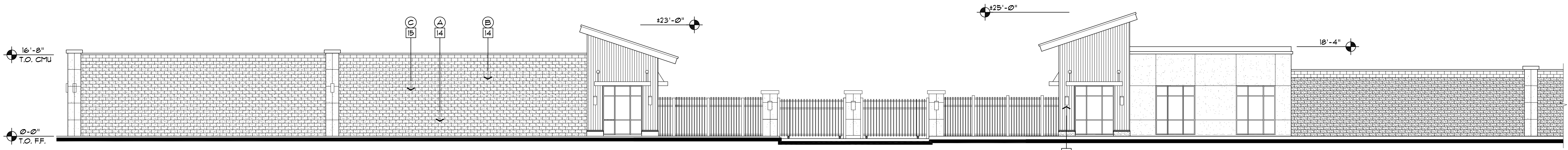
- |  |  |
|--|--|
| 1 PLASTER WALL   | 10 HORIZONTAL / VERTICAL REVEAL            |
| 2 METAL ROOFING  | 11 METAL LATTICE WORK                      |
| 3 METAL SIDING   | 12 METAL AWNING                            |
| 4 FOAM PARAPET CAP                                       | 13 GARAGE DOOR                             |
| 5 ALUMINUM STOREFRONT DOOR                               | 14 BLOCK WALL                              |
| 6 WROUGHT IRON SLIDING GATE                              | 15 BLOCK WALL, PLASTER WITH PLASTER FINISH |
| 7 WROUGHT IRON FENCE                                     | 16 CONCRETE BASE                           |
| 8 HOLLOW METAL DOOR                                      | 17 ACCENT LIGHTING                         |
| 9 CLEAR GLAZING SET IN ALUMINUM STOREFRONT WINDOW SYSTEM |  |

## FINISH SCHEDULE

- |   |  |
|---|--|
| A FIELD CMU BLOCK WALL - BASALITE 621, SPLIT FACE   | F METAL FLAT AWNING, MINI-V-BEAM META ROOF PANEL COOL MATTE BLACK SRI: 29 - LRV:5 - GA:24422 |
| B ACCENT CMU BLOCK WALL - BASALITE 621, GROUND FACE   | G WROUGHT IRON   |
| C DEC139 GOLDEN GATE  | H BLACK ANODIZED ALUMINUM FRAME W/ CLEAR GLAZING   |
| D METAL SIDING, MINI-V-BEAM META ROOF PANEL COOL MIDNIGHT BRONZE SRI: 21 - LRV:1 - GA:24422                 | I BLACK ANODIZED ALUMINUM  |
| E METAL ROOF/ SLOPED METAL CANOPY, MINI-V-BEAM META ROOF PANEL COOL TERRA-COTTA SRI: 41 - LRV:15 - GA:24422 | J CONCRETE BASE - CLEAR SEALER   |
|   | K 'GLIDDEN' SILVER SWORDPLAY 30BB 45/049   |

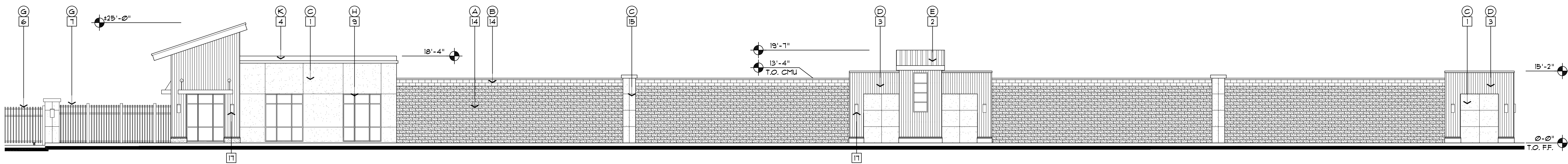


**WEST WALL ELEVATION**

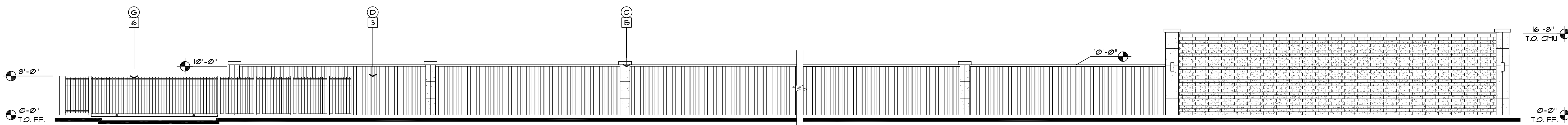


**BUILDING 'C' EAST ELEVATION - ATKINSON STREET**

**BUILDING 'A' EAST ELEVATION - ATKINSON STREET**

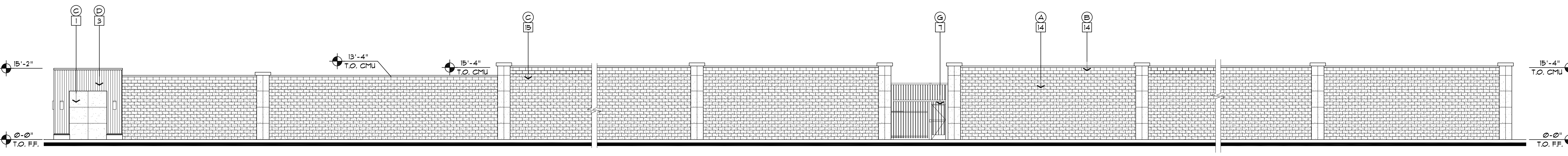


**BUILDING 'A' EAST ELEVATION - ATKINSON STREET**

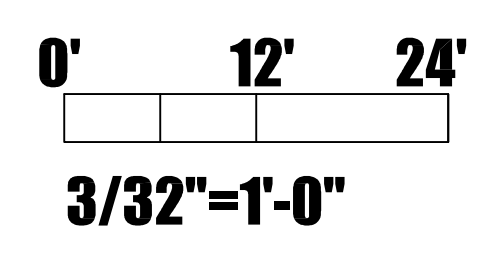


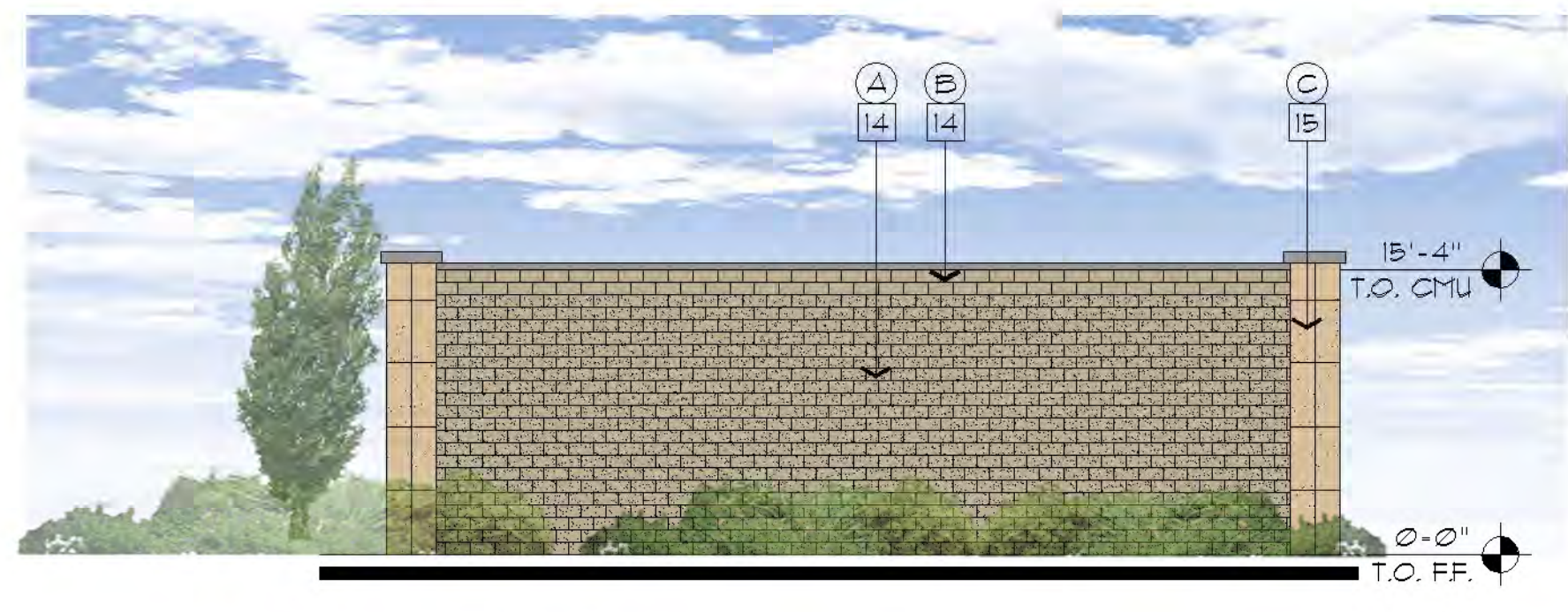
**BUILDING 'B' SOUTH ELEVATION**

**BUILDING 'C' SOUTH ELEVATION**



**BUILDING 'A' NORTH ELEVATION**





**WEST WALL ELEVATION**

**KEYNOTES**

1 PLASTER WALL	10 HORIZONTAL/ VERTICAL REVEAL
2 METAL ROOFING	11 METAL LATICE WORK
3 METAL SIDING	12 METAL AWNING
4 FOAM PARAPET CAP	13 GARAGE DOOR
5 ALUMINUM STOREFRONT DOOR	14 BLOCK WALL
6 WROUGHT IRON SLIDING GATE	15 BLOCK WALL PLASTER WITH FLASTER FINISH
7 WROUGHT IRON FENCE	16 CONCRETE BASE
8 HOLLOW METAL DOOR	17 ACCENT LIGHTING
9 CLEAR GLAZING SET IN ALUMINUM STOREFRONT WINDOW SYSTEM	

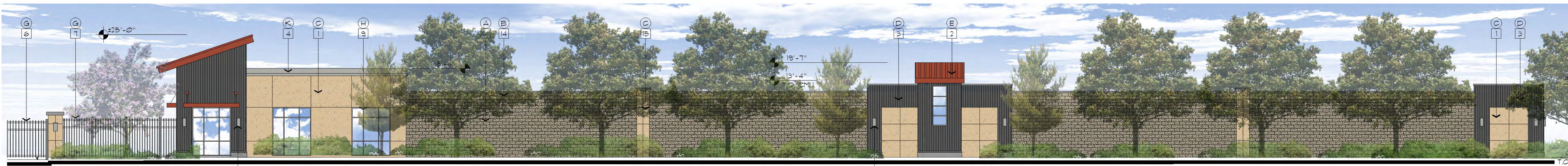
**FINISH SCHEDULE**

A FIELD CMU BLOCK WALL - BASALITE #21, 8/11T FACE	F METAL FLAT AWNING: MINI-V-BEAM META ROOF PANEL COOL MATTE BLACK SRI: 29 - LRV:5 - GA:24422
B ACCENT CMU BLOCK WALL - BASALITE #21, GROUND FACE	G WROUGHT IRON
C DECT39 GOLDEN GATE	H BLACK ANODIZED ALUMINUM FRAME W/ CLEAR GLAZING
D METAL SIDING, MINI-V-BEAM META ROOF PANEL COOL MIDNIGHT BRONZE SRI: 21 - LRV:1 - GA:24422	I BLACK ANODIZED ALUMINUM
E METAL ROOF/ SLOPED METAL CANOPY, MINI-V-BEAM META ROOF PANEL COOL TERRA-COTTA SRI: 41 - LRV:15 - GA:24422	J CONCRETE BASE - CLEAR SEALER
	K 'GLIDDEN' SILVER SWORDPLAY 30BB 45/049



**BUILDING 'C' EAST ELEVATION - ATKINSON STREET**

**BUILDING 'A' EAST ELEVATION - ATKINSON STREET**

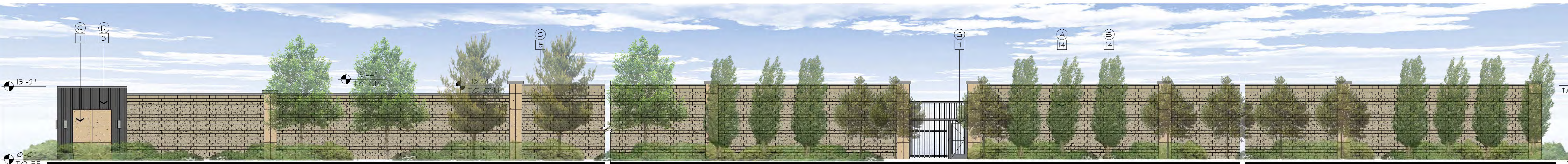


**BUILDING 'A' EAST ELEVATION - ATKINSON STREET**

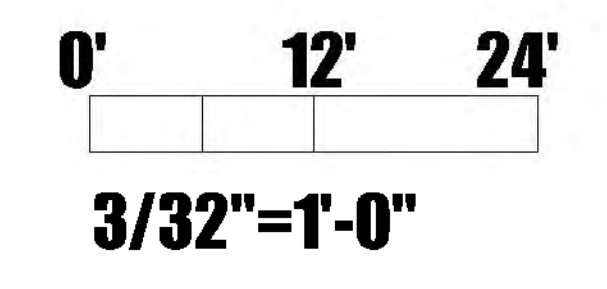


**BUILDING 'B' SOUTH ELEVATION**

**BUILDING 'C' SOUTH ELEVATION**

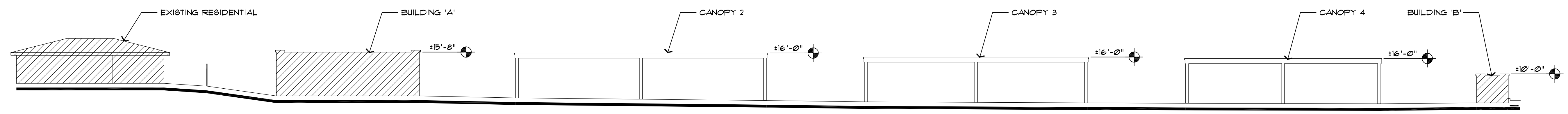


**BUILDING 'A' NORTH ELEVATION**

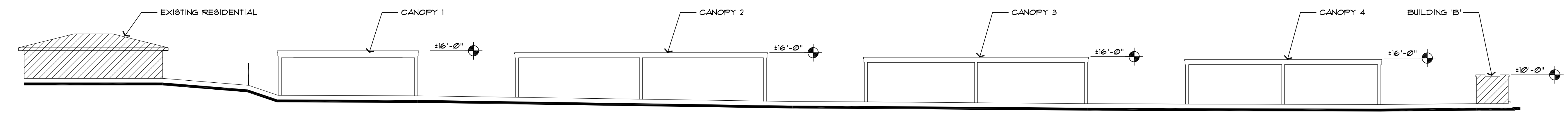
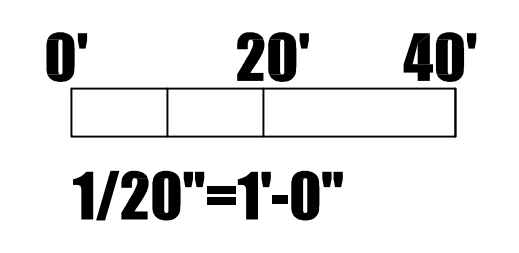




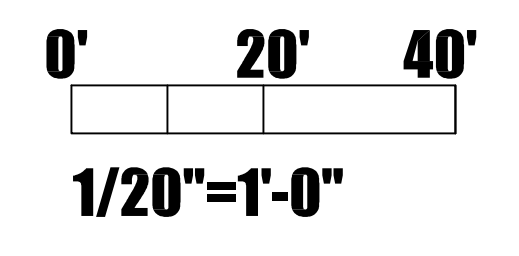
**METAL CANOPY EXAMPLE**

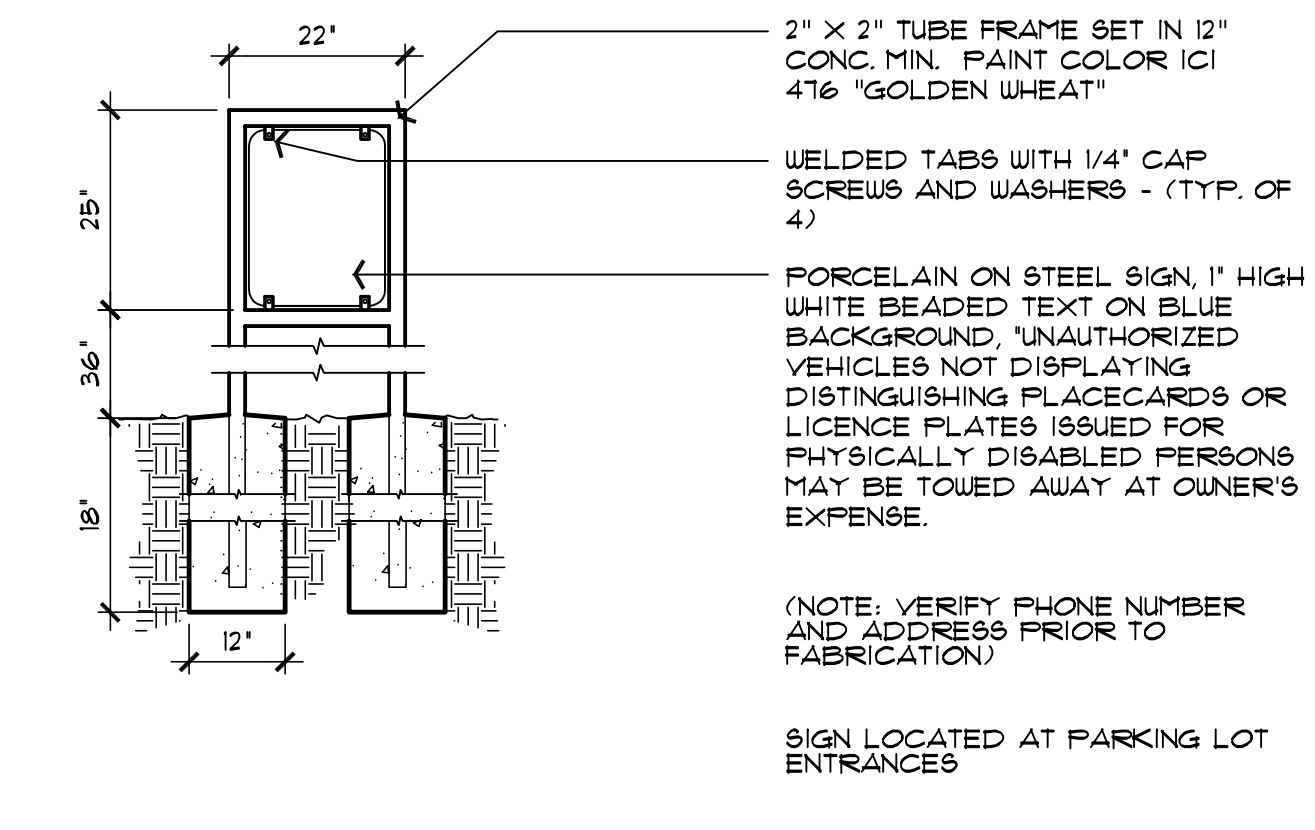


**SITE SECTION PROFILE 1**

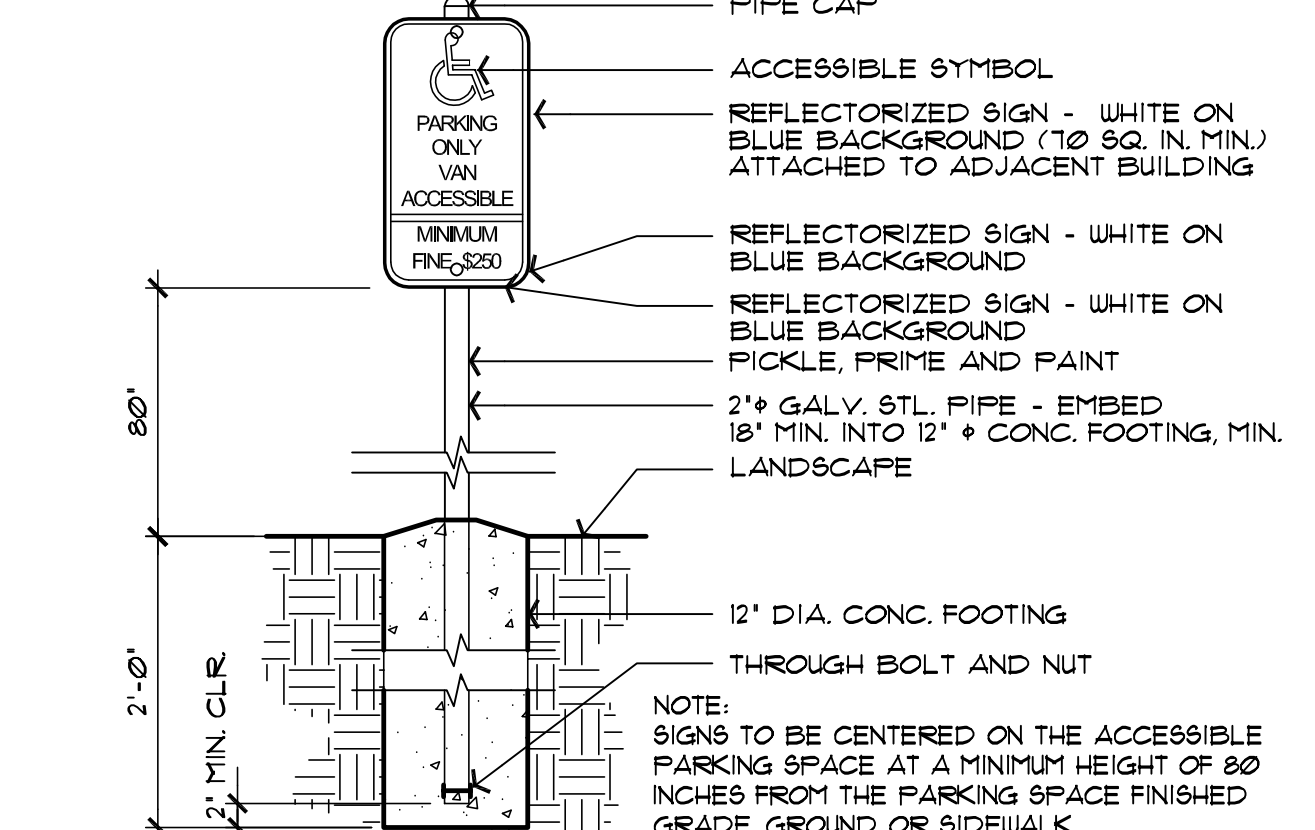


**SITE SECTION PROFILE 2**

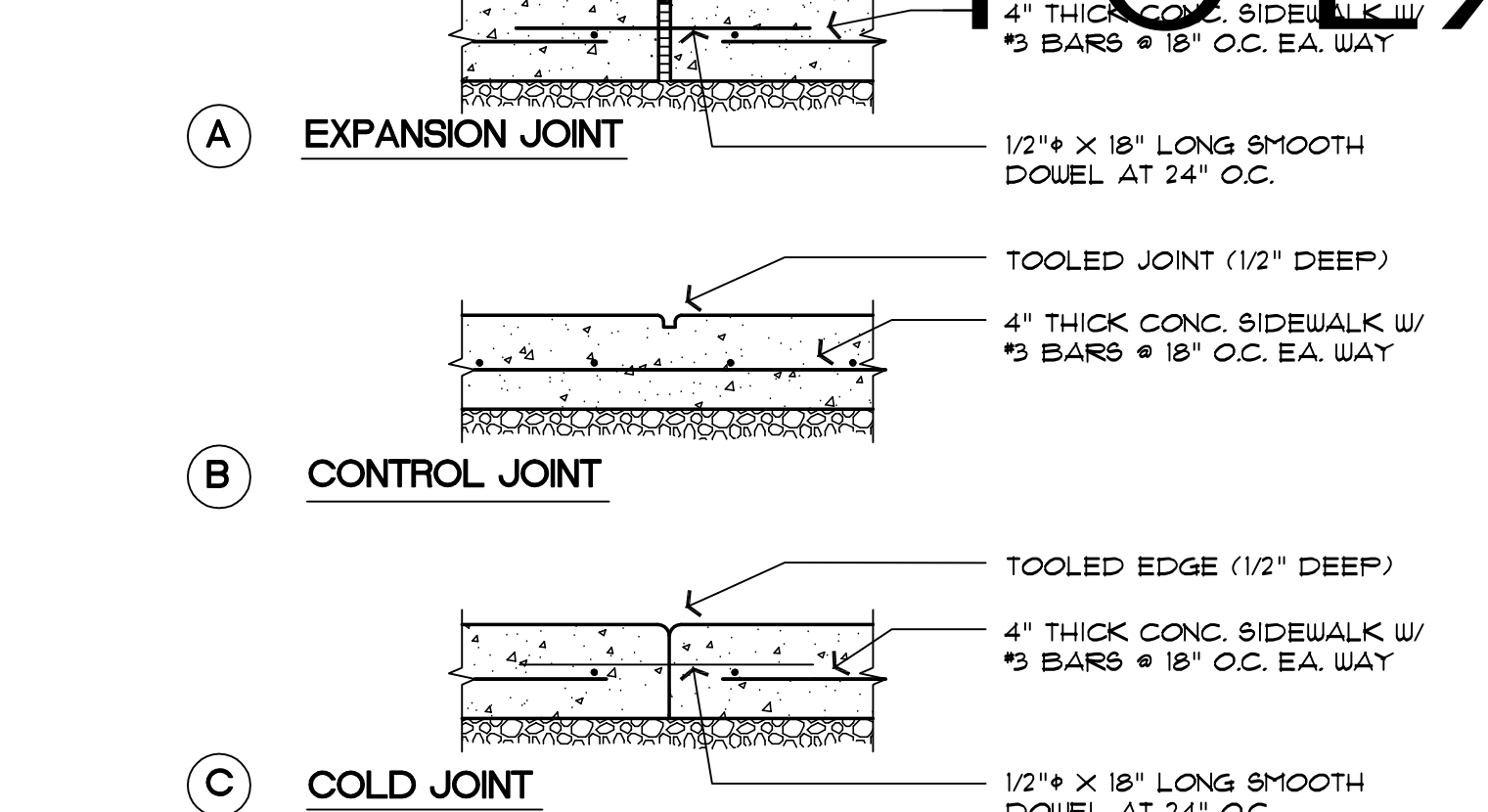




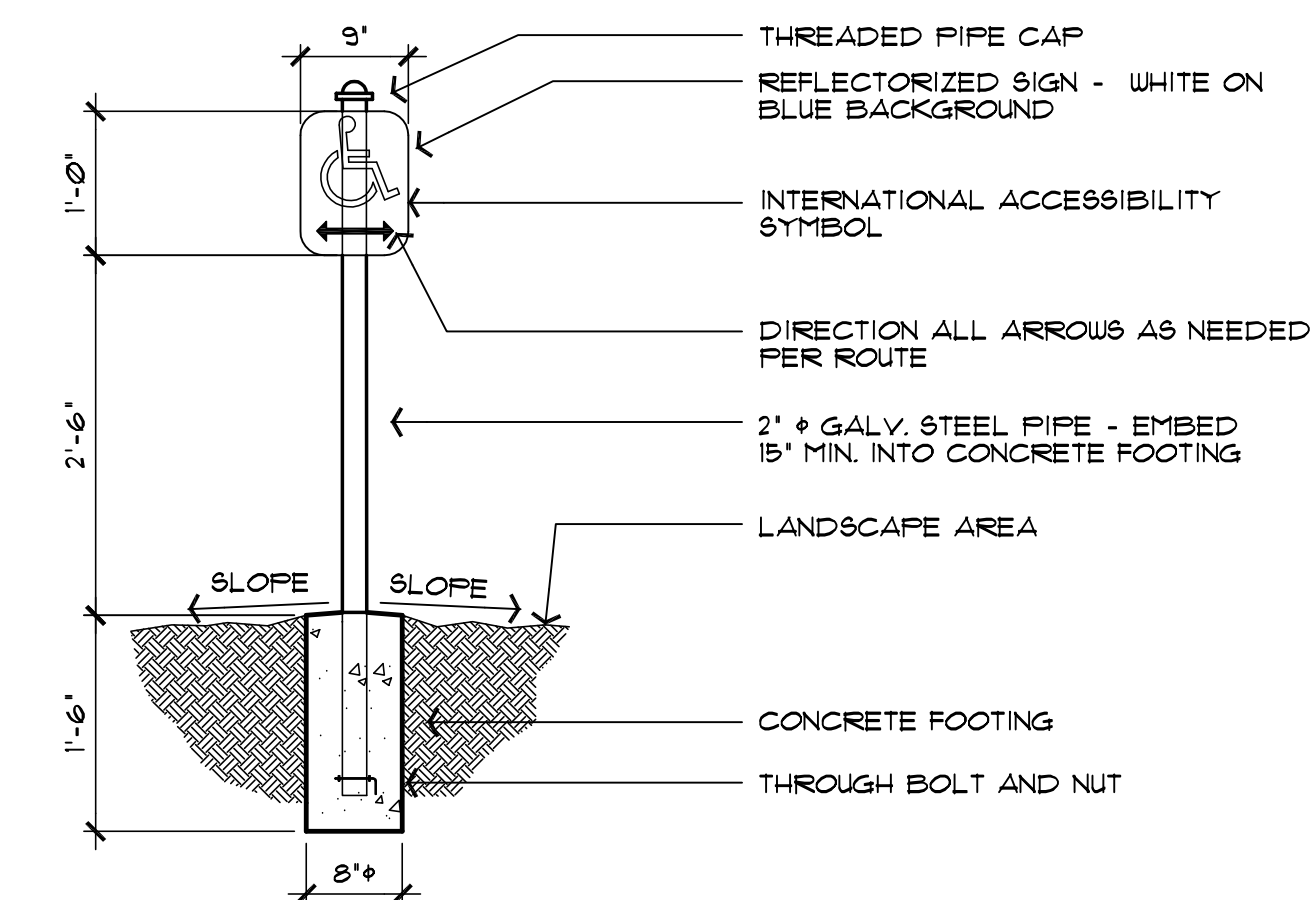
12 ENTRY SIGNAGE 1/2"



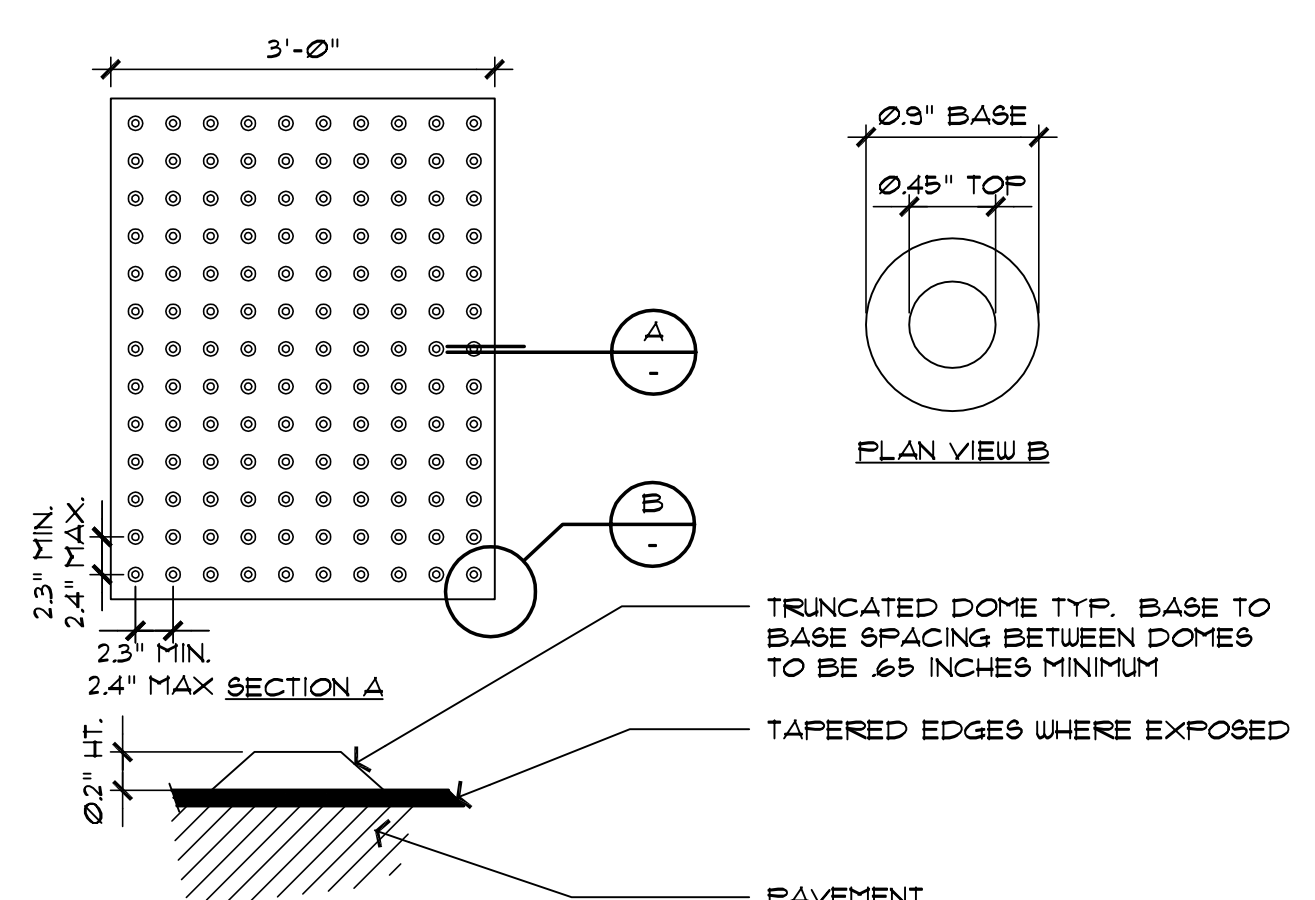
8 ACCESSIBLE SIGNAGE 3/4"



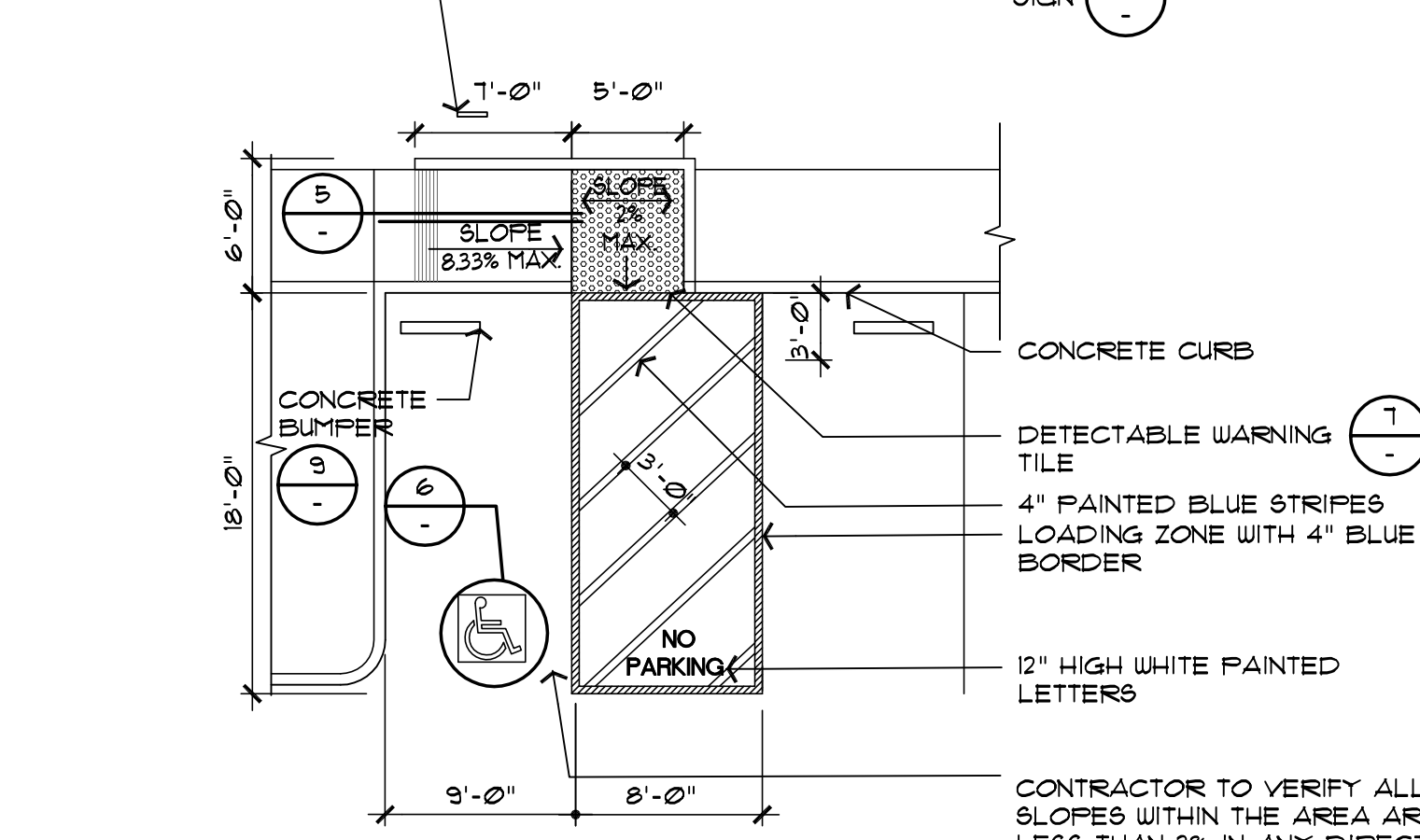
4 CONCRETE JOINTS 1-1/2"



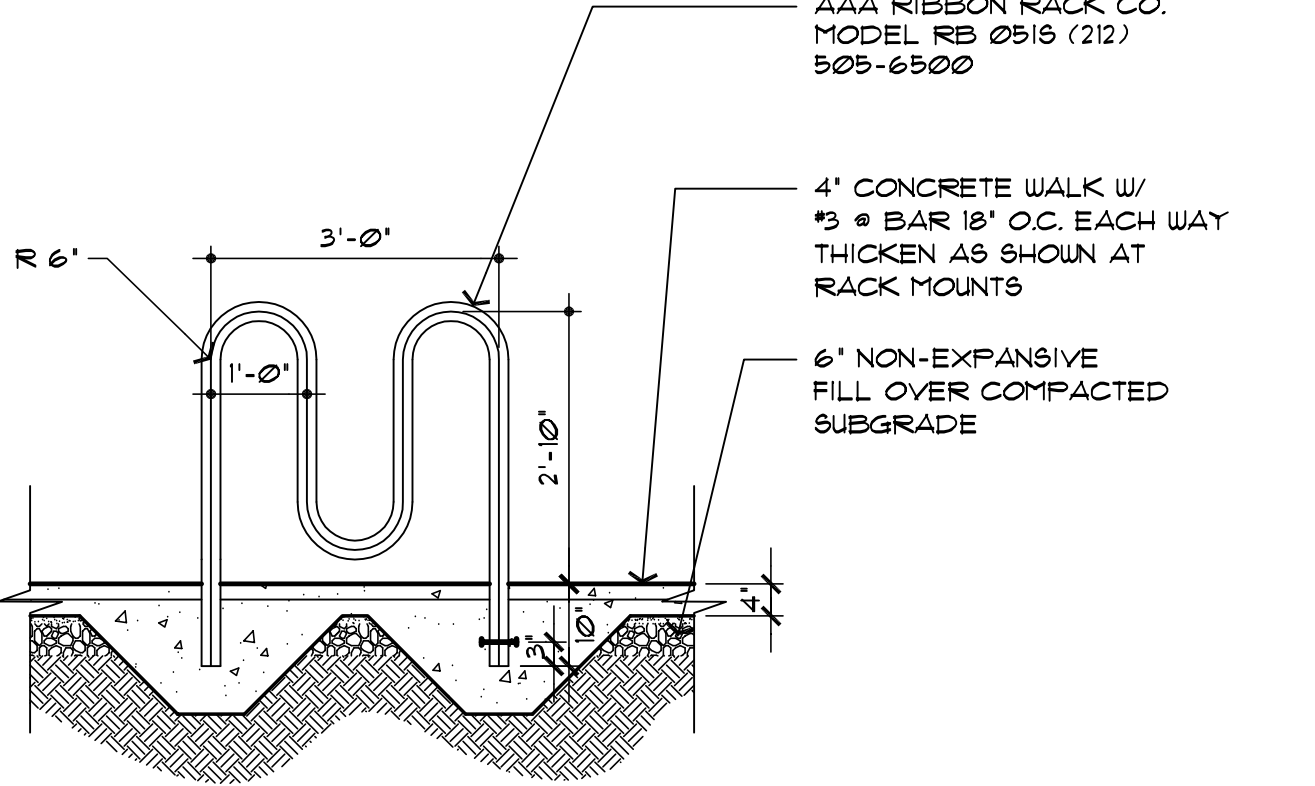
11 ACCESSIBLE PATH SIGN 3/4"



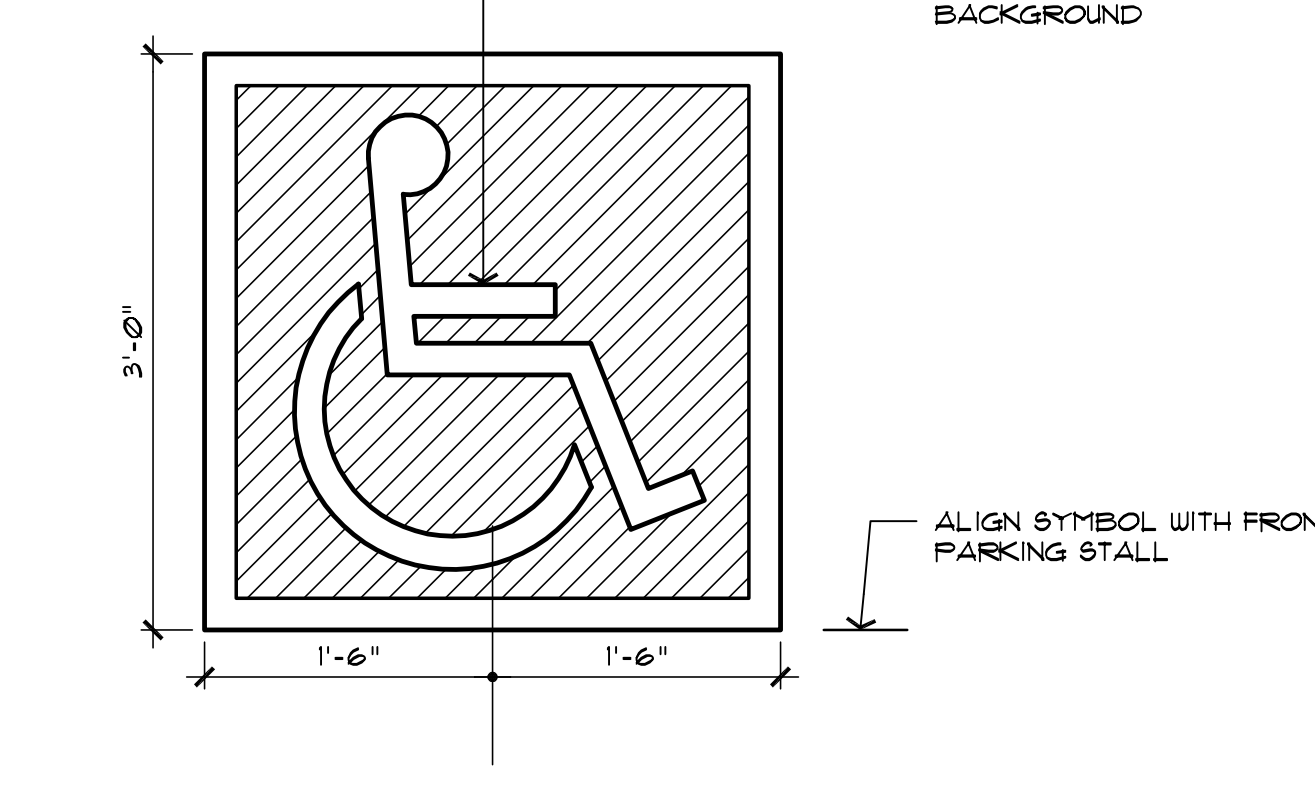
7 DETECTABLE WARNING 1"



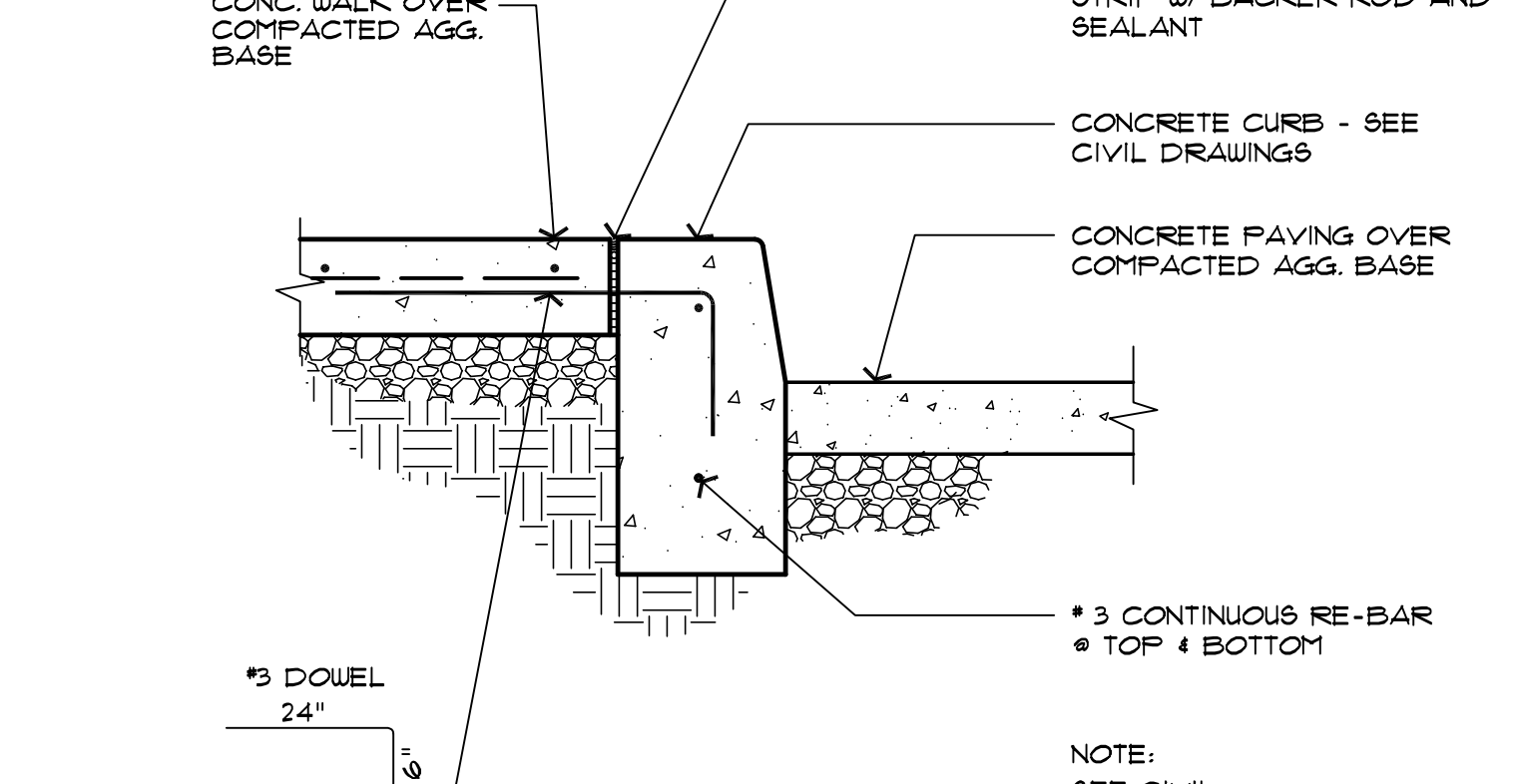
3 ACCESSIBLE STALL 1/8"



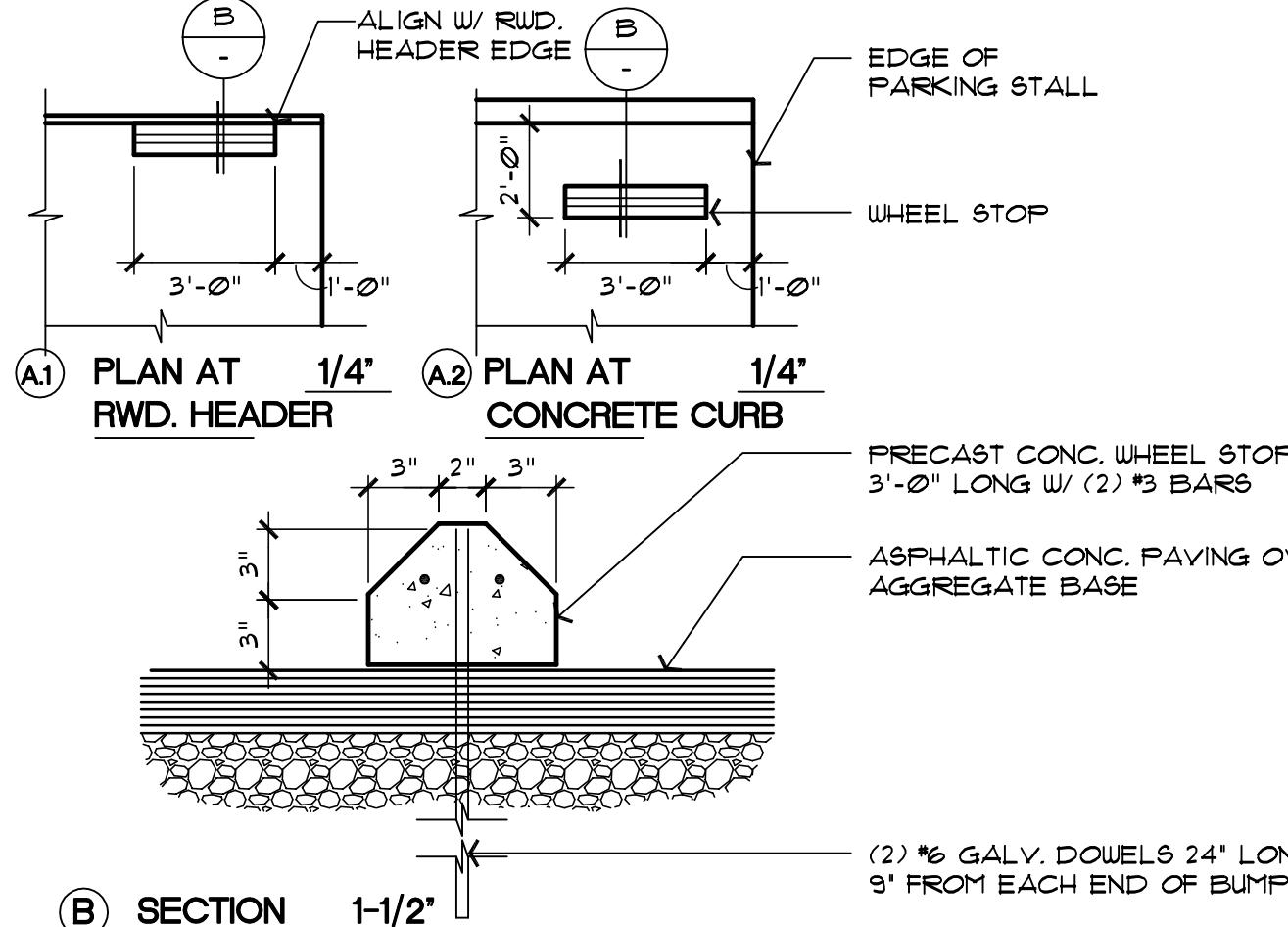
10 BIKE RACK 1/2"



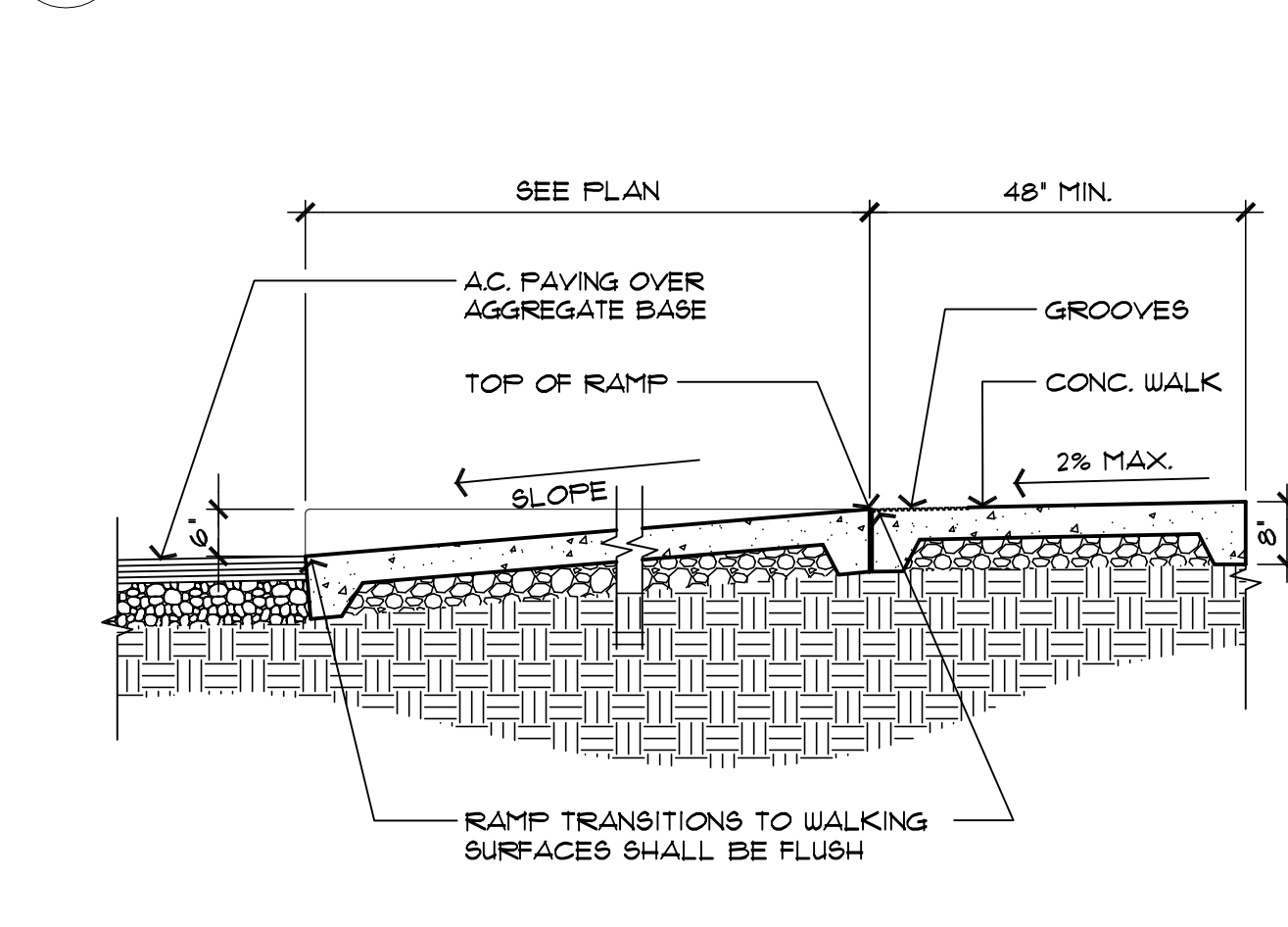
5 RAMP SECTION 1/2"



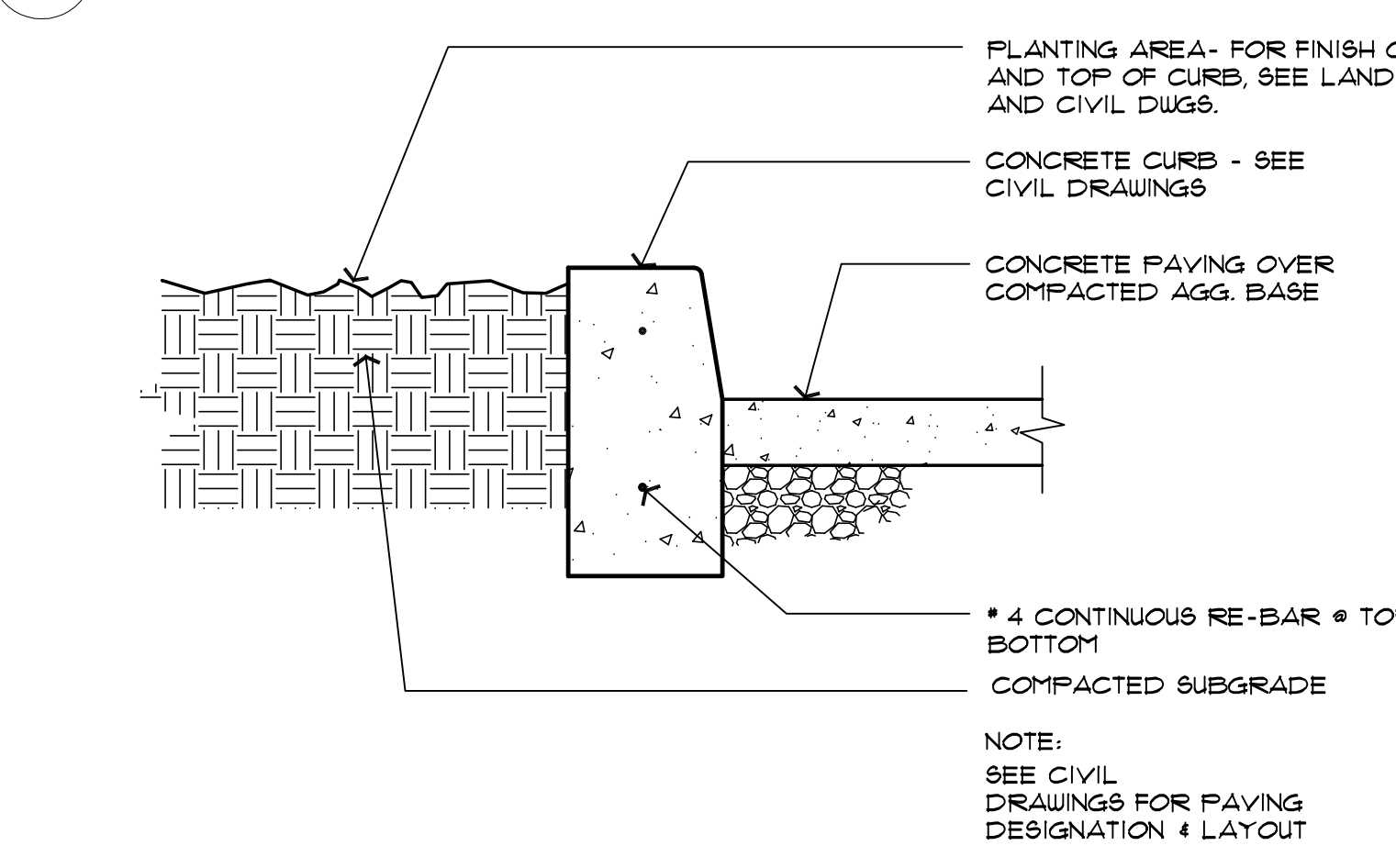
2 CURB AND WALK 1-1/2"



9 CONCRETE WHEEL STOP 1-1/2"



6 ACCESSIBLE SYMBOL 1"



1 CURB @ LANDSCAPE 1-1/2"

# PRELIMINARY GRADING AND UTILITY PLAN FOR: 102 ATKINSON STREET

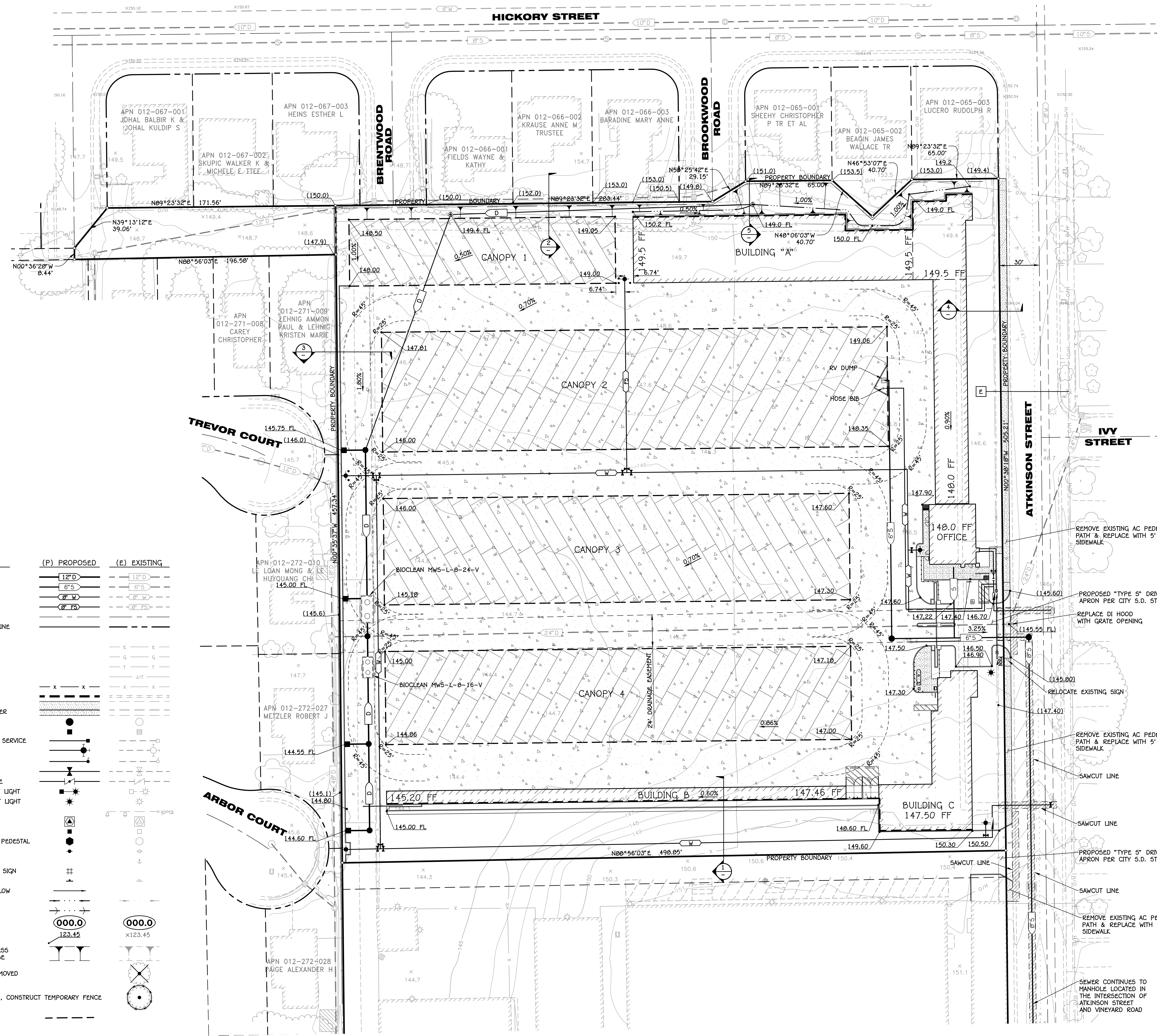
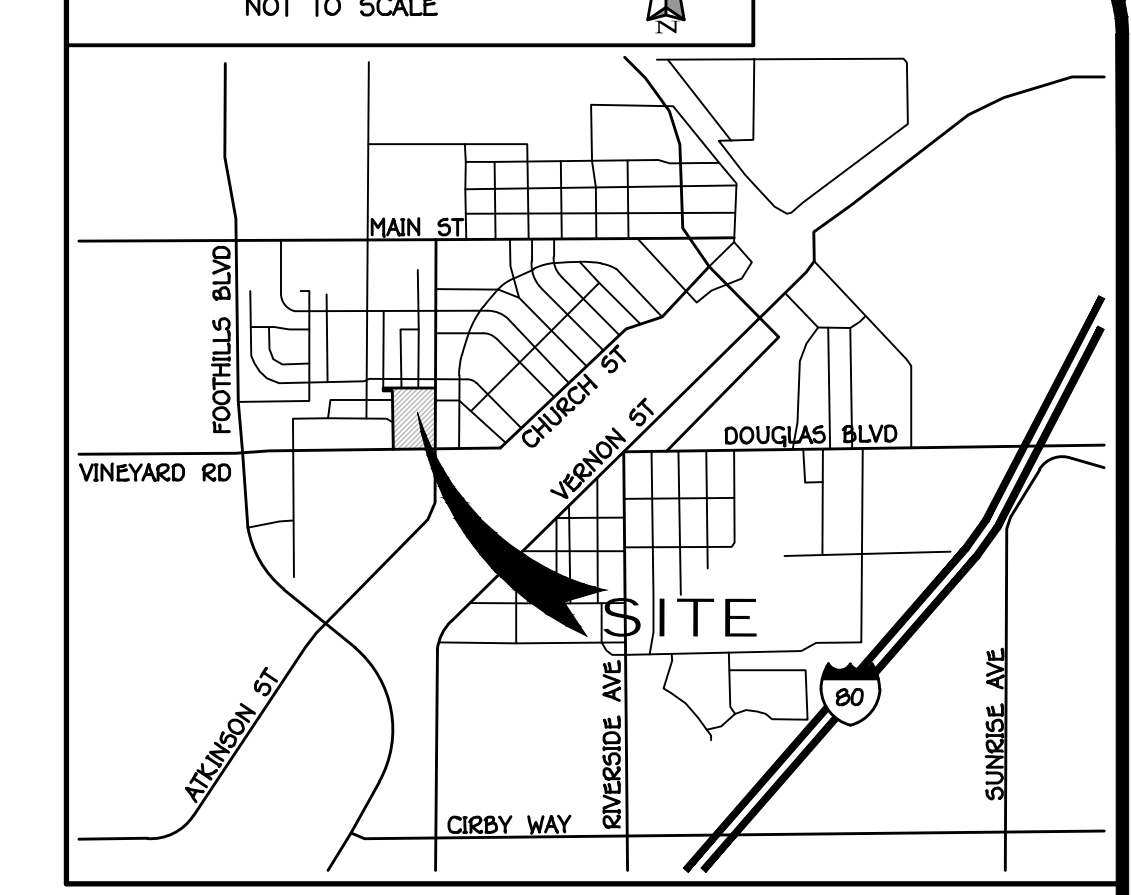
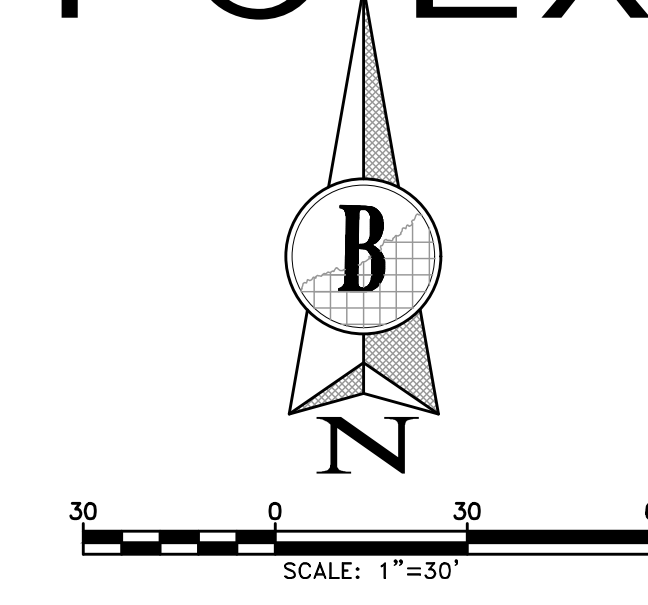
APN: 012-010-012 & 013

CITY OF ROSEVILLE

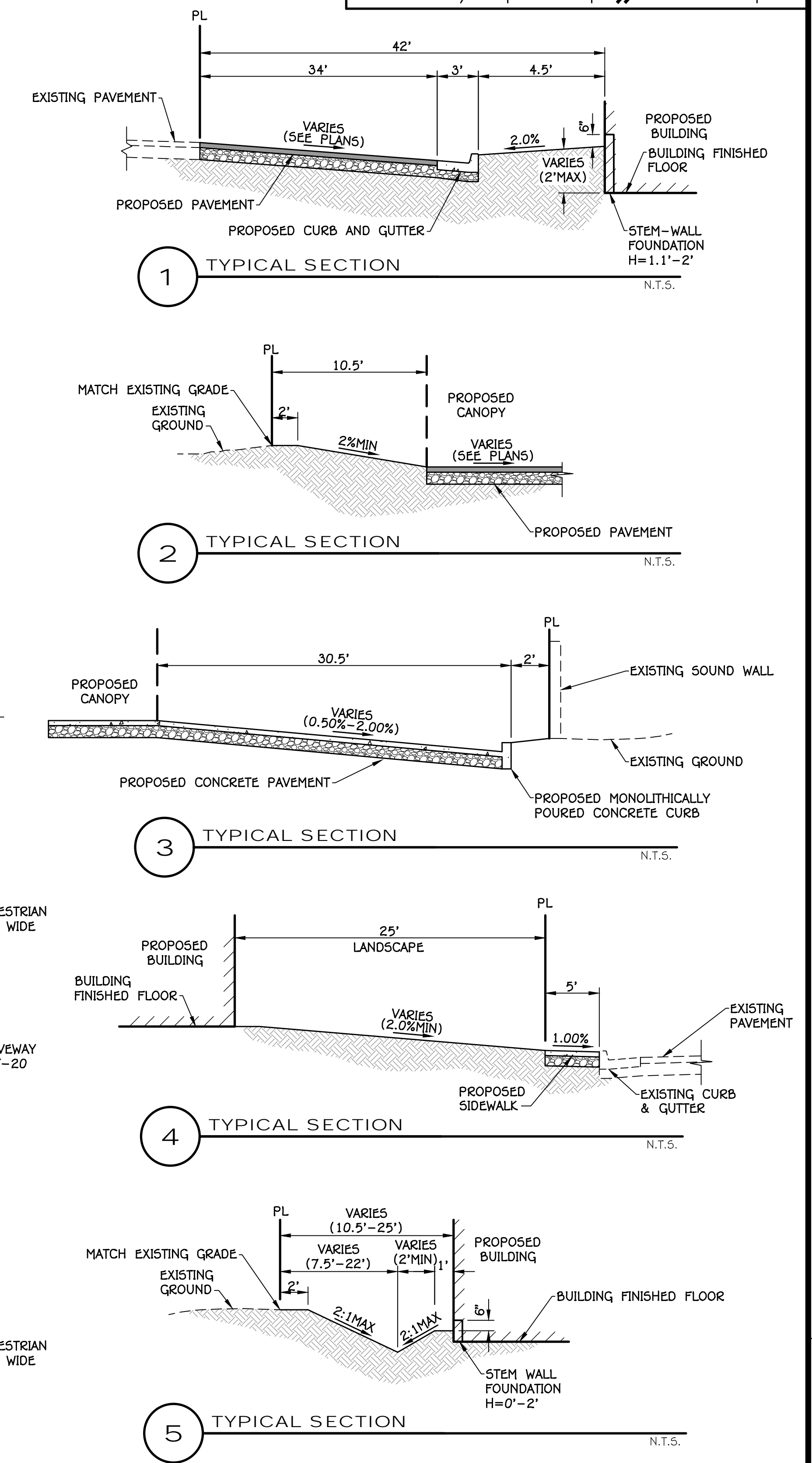
CALIFORNIA

PC Exhibit C

VICINITY MAP  
NOT TO SCALE



LEGEND	(P) PROPOSED	(E) EXISTING
STORM DRAIN	12" D	12" D
SANITARY SEWER	6" S	6" S
WATER MAIN	8" W	8" W
FIRE SERVICE	8" FS	8" FS
CENTERLINE		
RIGHT OF WAY LINE		
BOUNDARY LINE		
ELECTRICAL LINE		
GAS LINE		
TELEPHONE LINE		
JOINT TRENCH		
FENCE		
RETAINING WALL		
SIDEWALK WITH CURB AND GUTTER		
MANHOLE		
DRAIN INLET		
METERED WATER SERVICE		
FIRE HYDRANT		
BLOWOFF VALVE		
GATE VALVE		
BUTTERFLY VALVE		
TYPE 'A' STREET LIGHT		
TYPE 'B' STREET LIGHT		
TRAFFIC SIGNAL		
TRANSFORMER		
PULLBOX		
UTILITY SERVICE PEDESTAL		
UTILITY POLE		
GUY WIRE		
4 SIDED STREET SIGN		
SIGN		
DIRECTION OF FLOW		
FLOWLINE		
SWALE		
PAD ELEVATION	000.0	000.0
ELEVATION	123.45	x123.45
2:1 SLOPE UNLESS NOTED OTHERWISE		
TREE TO BE REMOVED		
TREE TO REMAIN, CONSTRUCT TEMPORARY FENCE		
CANOPY		



PRELIMINARY GRADING AND UTILITY PLAN FOR:  
102 ATKINSON STREET  
MARCH 30, 2021



1001 Enterprise Way, Suite 100 Roseville, CA 95678 (916) 783-8898

ALL UTILITIES SHOWN ARE BASED ON RECORD DRAWINGS AND FIELD SURVEY. THE ENGINEER HAS CONDUCTED VISUAL INSPECTIONS OF THE UTILITIES SHOWN AND HAS FOUND THEM TO BE CORRECT. THE ENGINEER HAS NOT CONDUCTED ANY OTHER INVESTIGATIONS. THE ENGINEER HAS NOT CONDUCTED ANY OTHER INVESTIGATIONS. THE ENGINEER HAS NOT CONDUCTED ANY OTHER INVESTIGATIONS.



**YAMASAKI**  
LANDSCAPE ARCHITECTURE

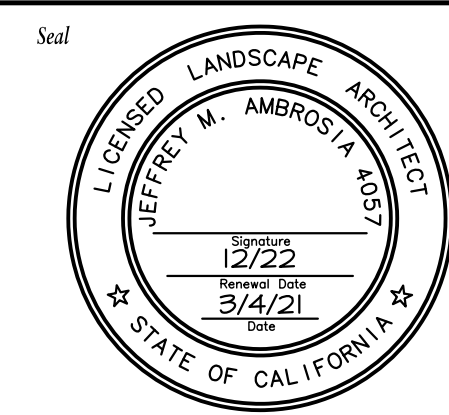
JEFF AMBROSIA, ASLA C4057

1223 HIGH STREET  
AUBURN, CALIFORNIA 95603  
(530) 885-0040  
FAX (530) 885-0042  
www.yamasaki-la.com

**ATKINSON SELF STORAGE  
LANDSCAPE DEVELOPMENT PLANS  
ATKINSON ST. & HICKORY ST.  
ROSEVILLE, CALIFORNIA**

These drawings are instruments of service and are the property of Yamasaki Landscape Architecture. All designs and other information on the drawings are for the use on the specified project and shall not be used otherwise without the express written permission of Yamasaki Landscape Architecture.

Sheet Title  
**PLANTING PLAN**



No.	Date	Revision
▲		
▲		
▲		
▲		

Project Mgr.: JMA Sheet No.:  
Drawn By: CJM  
Scale: 1"=30' **L 1.1**  
Date: 23 NOV 20  
File Name: AS-PL of 2 sheets

## ATKINSON STREET

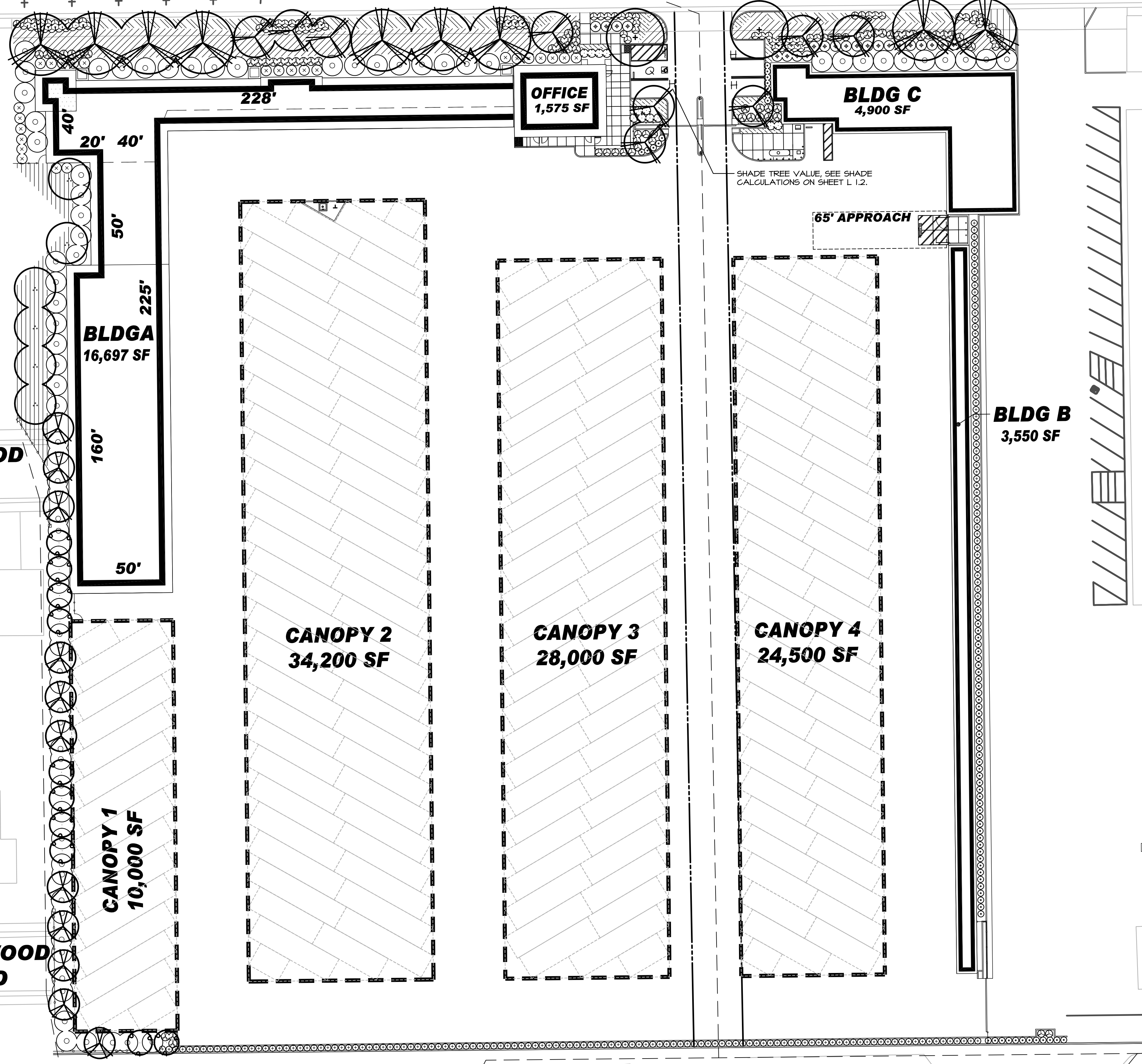
## HICKORY STREET

### BROOKWOOD ROAD

### BRENTWOOD ROAD

### TREVOR COURT

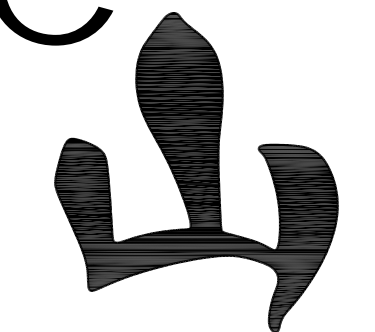
### ARBOR COURT



### PLANT SCHEDULE

TREES	CODE
	LAG NAT
	LAU NOB
	PIS KEI
	PYR CAP
	QUE URB
	QUE FAS
SHRUBS	CODE
	CAL L JN
	GRE NOE
	LOR RUB
	NAN COM
	NAN LEM
	XYL CON
GRASSES	CODE
	MUH REG
	MUH RIG
GROUND COVERS	CODE
	ARC EME
	CIS HYB
	COT LOW
	LAN SEL

SEE FULL PLANT SCHEDULE ON SHEET L 1.2



**YAMASAKI**  
LANDSCAPE ARCHITECTURE

JEFF AMBROSIA, ASLA C4057

1223 HIGH STREET  
AUBURN, CALIFORNIA 95603  
(530) 885-0040  
FAX (530) 885-0042  
www.yamasaki-la.com

## PLANT SCHEDULE

TREES	CODE	QTY	BOTANICAL / COMMON NAME	SIZE	
	LAG NAT	9	Lagerstroemia x 'Natchez' / Grape Myrtle	15 gal	
	LAU NOB	6	Laurus nobilis / Sweet Bay	15 gal	
	PIS KEI	2	Pistacia chinensis 'Keith Davey' / Keith Davey Chinese Pistache	15 gal	
	PYR CAP	10	Pyrus calleryana 'Capital' / Capital Callery Pear	15 gal	
	QUE URB	9	Quercus macrocarpa 'Urban Pinnacle' / Urban Pinnacle Oak	15 gal	
	QUE FAS	11	Quercus robur fastigiata / Pyramidal English Oak	15 gal	
SHRUBS	CODE	QTY	BOTANICAL / COMMON NAME	SIZE	
	CAL LJN	12	Callistemon viminalis 'Little John' / Little John Weeping Bottlebrush	5 gal	
	GRE NOE	25	Grevillea x 'Noellii' / Grevillea	5 gal	
	LOR RUB	22	Loropetalum chinense rubrum / Chinese Fringe Flower	5 gal	
	NAN COM	188	Nandina domestica 'Compacta' / Dwarf Heavenly Bamboo	1 gal	
	NAN LEM	70	Nandina domestica 'Lemon Lime' / Lemon Lime Nandina	1 gal	
	XYL CON	77	Xylosma congestum / Shiny Xylosma	5 gal	
GRASSES	CODE	QTY	BOTANICAL / COMMON NAME	SIZE	
	MUH REG	110	Muhlenbergia capillaris 'Regal Mist' / Muhly	5 gal	
	MUH RIG	55	Muhlenbergia rigens / Deer Grass	5 gal	
GROUND COVERS	CODE	QTY	BOTANICAL / COMMON NAME	SIZE	SPACING
	ARC EME	134	Arctostaphylos uva-ursi 'Emerald Carpet' / Emerald Carpet Manzanita	1 gal	36" o.c.
	CIS HYB	118	Cistus x hybridus 'Little Miss Sunshine' / Little Miss Sunshine Rockrose	1 gal	24" o.c.
	COT LOW	84	Cotoneaster dammeri 'Lowfast' / Lowfast Bearberry Cotoneaster	1 gal	60" o.c.
	LAN SEL	170	Lantana sellowiana / Trailing Lantana	1 gal	60" o.c.

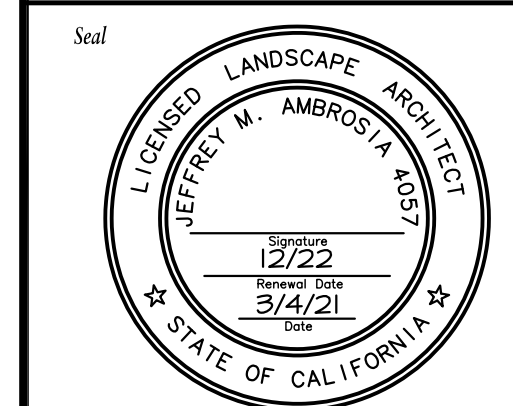
## PARKING LOT SHADE CALCULATIONS

TREE SYMBOL	100%	50%	25%
PIS. CHI.		1 (354) = 354	1 (177) = 177
LAG. NAT.		2 (157) = 314	
TOTAL PAVED AREA	1,620 s.f.		
SHADE REQUIRED	810 s.f.		
SHADE PROVIDED	<b>845 s.f.</b>		
PERCENT SHADE	<b>52%</b>		

**ATKINSON SELF STORAGE  
LANDSCAPE DEVELOPMENT PLANS  
ATKINSON ST. & HICKORY ST.  
ROSEVILLE, CALIFORNIA**

These drawings are instruments of service and are the property of Yamasaki Landscape Architecture. All designs and other information on the drawings are for the use on the specified project and shall not be used otherwise without the express written permission of Yamasaki Landscape Architecture.

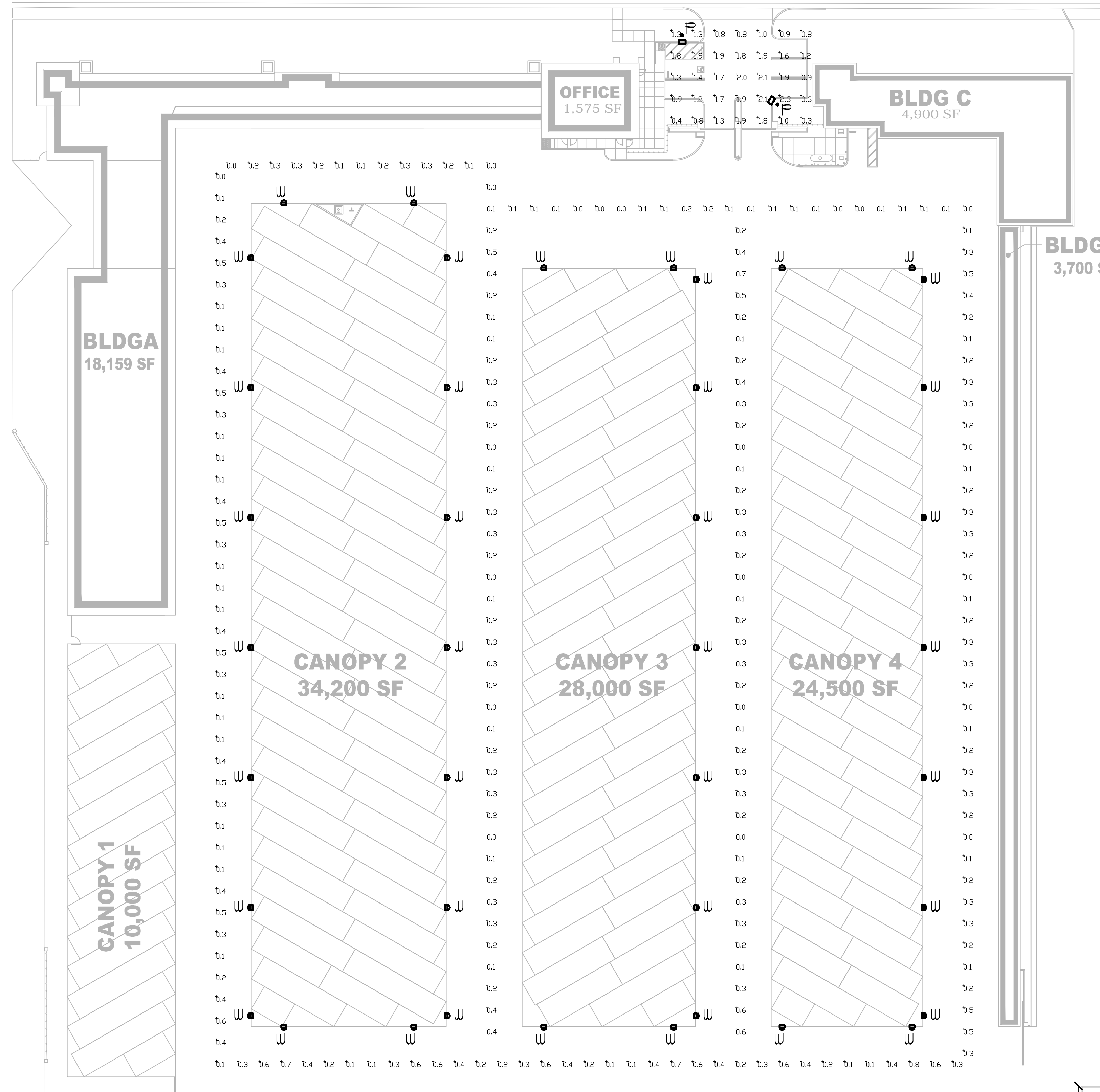
Sheet Title  
**PLANTING SCHEDULES**



No.	Date	Revision
△		
△		
△		
△		

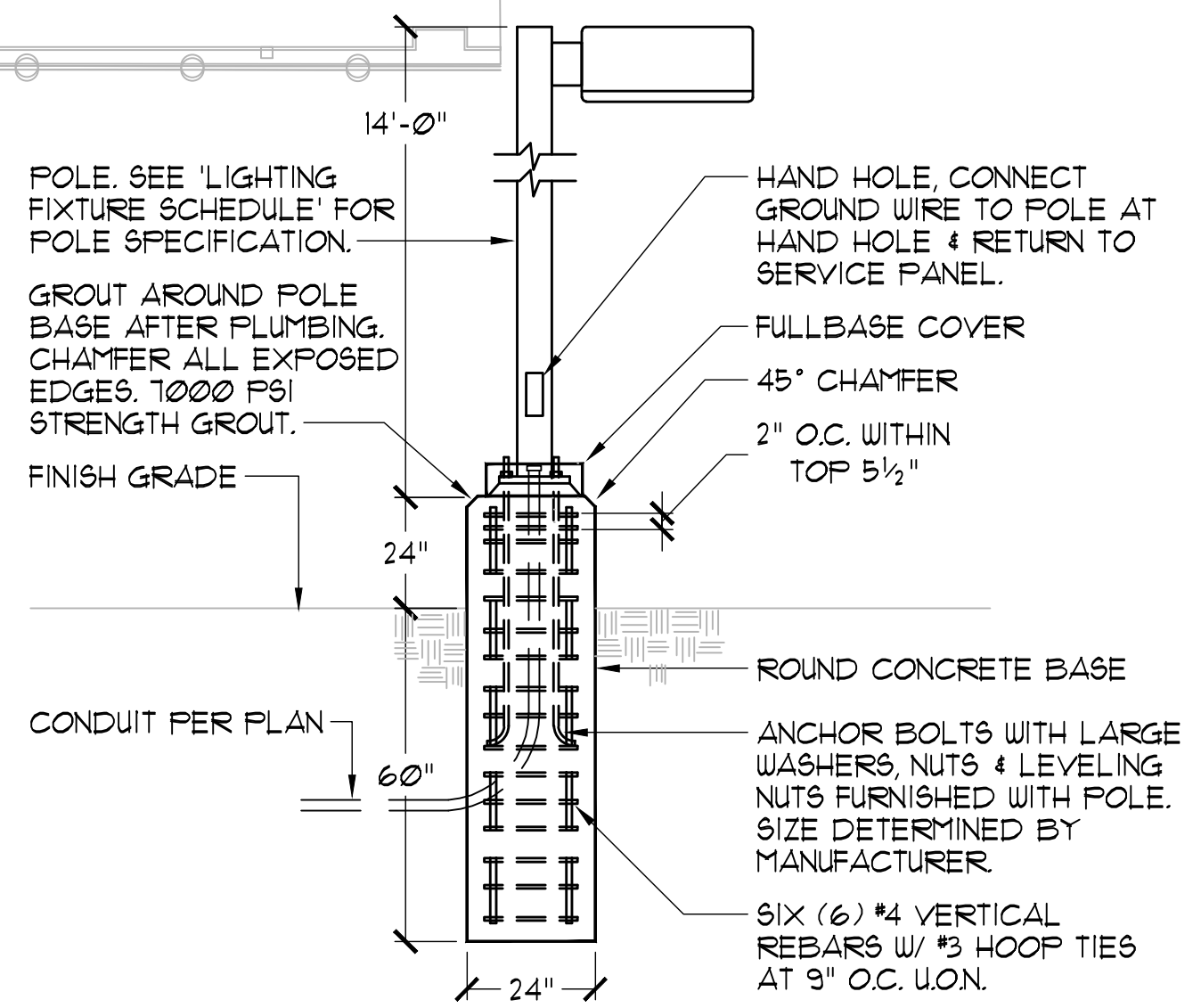
Project Mgr.: JMA Sheet No.:  
 Drawn By: CJM  
 Scale: 1"=30' **L 1.2**  
 Date: 23 NOV 20  
 File Name: AS-PL of 2 sheets

S:\Users\jambrosia\Documents\Self\_Storage\Atkinson Self\_Storage\Atkinson Self\_Storage\PC-PL.dwg, 11/23/20, 4:50 PM, by: jeff.ambrosia



**PHOTOMETRIC PLAN**  
SCALE: 1" = 30'-0"

LIGHTING FIXTURE SCHEDULE						
TYPE	MANUFACTURER	FIXT. VOLT.	LAMPS NO. TYPE	INPUT V.A.	MOUNTING	REMARKS
F	LITHONIA #DSX0-LED-FI-30K- T3M-MVOLT-6PA ON 14" POLE	120-277V	LED	38	POLE MOUNT 14'-0" ON 2'-0" BASE SEE DETAIL	SINGLE HEAD POLE MOUNT LED LUMINAIRE WITH TYPE III DISTRIBUTION, DARK SKY, FULL CUTOFF STYLE, WET LOCATION
W	LITHONIA #OLW14	120-277V	LED	14	SURFACE FACE OF CANOPY #15'-0" AFF	LED WALL PACK WET LOCATION



**LITHONIA LIGHTING**

**FEATURES & SPECIFICATIONS**

**INTENDED USE**  
Provides years of maintenance-free general illumination for outdoor use in commercial applications such as retail, education, multi-unit housing and storage. Ideal for lighting building facades, parking areas, walkways, garages, loading areas and any other outdoor space requiring reliable safety and security.

**CONSTRUCTION**  
Sturdy weather-resistant aluminum housing with a bronze finish, standard unless otherwise noted. A clear polycarbonate lens protects the optics from moisture, dirt and other contaminants.

**OPTICS**  
8 high performance LEDs are powered by a multi-volt (120V-277V) LED driver that uses 18 input watts and delivers 1,800 lumens, 100,000 hour LED life span based on IESNA LM-80-08 results and calculated per IESNA TM-21-11 methodology.

**ELECTRICAL**  
Rated for outdoor installations, -40°C minimum ambient.  
Adjustable dusk-to-dawn, multi-volt photocell standard automatically turns light on at dusk and off at dawn for convenience and energy savings.  
Photocell can be disabled by rotating the photocell cover.  
6KV  
Surface or recessed mount. A universal junction box is included standard.  
All mounting hardware included.

**LISTINGS**  
UL Certified to US and Canadian safety standards. Wet location listed for mounting higher than 4 feet off the ground.  
Titled in accordance with IESNA LM-79 and LM-80 standards.  
DesignLights Consortium (DLC) qualified product. Not all versions of this product may be DLC qualified. Please check the DLC Qualified Products List at [www.designlights.org/DLC](http://www.designlights.org/DLC) to confirm which versions are qualified.

**WARRANTY**  
5-year limited warranty. Complete warranty terms located at: [www.lithonia.com/warranty/customer-support/terms-and-conditions](http://www.lithonia.com/warranty/customer-support/terms-and-conditions)  
Note: Actual performance may differ as a result of end-user environment and application. Specifications subject to change without notice.

**Outdoor General Purpose**

**OLW14** LED WALL PACK

**ORDERING INFORMATION** For shortest lead times, configure product using **bolded options**.

Series	Color temperature (CCT)	Voltage	Control	Finish	
<b>OLW14</b>	<b>1,800 lumen</b> LED wall pack	<b>(blank)</b> 5000K	<b>(blank)</b> MVOLT (120V-277V)	<b>(blank)</b> MVOLT photocell included	<b>WH</b> White

Notes:  
1. Correlated Color Temperature (CCT) shown is nominal per ANSI C78.377-2008.

**LITHONIA LIGHTING** OLW14  
OUTDOOR: One Lithonia Way, Conyers, Georgia 30012 Phone: 1-800-705-SERV (7378) www.lithonia.com © 2011-2020 Acuity Brands Lighting, Inc. All rights reserved. Rev. 10/13/20

**LITHONIA LIGHTING**

**D-Series Size 0** LED Area Luminaire

**Specifications**

EPA: 0.95 f2 (0.91 f1)

Length: 26" (0.66 m)

Width: 13" (0.33 m)

Height: 3" (0.08 m)

Weight (max): 16 lbs (7.25 kg)

**Ordering Information** EXAMPLE: DSX0 LED P6 40K T3M MVOLT SPA NPLAIR2 PIRHN DDBXD

Series	LEDs	Color temperature	Distribution	TSS	Type V short <sup>1</sup>	MVOLT (120V-277V) <sup>1,2</sup>	Shipped included
DSX0 LED	P1	30K	T55	Type I short (Automotive)	T5M	XVOLT (277V-480V) <sup>1,2</sup>	SPA Square pole mounting
	P2	40K	T25	Type II short	T5W	XVOLT (277V-480V) <sup>1,2</sup>	RPA Round pole mounting <sup>3</sup>
	P3	50K	T55	Type III short	BLC Backlight control <sup>4</sup>	240*	WBA Wall bracket <sup>5</sup>
	P4 <sup>1</sup>		T3M	Type III medium	LCO Left corner cutoff <sup>6</sup>	240*	SPUMBA Square pole universal mounting adaptor <sup>7</sup>
	P10 <sup>1</sup>		T4M	Type IV medium	RCCO Right corner cutoff <sup>6</sup>	277*	RPMBA Round pole universal mounting adaptor <sup>7</sup>
	P12 <sup>1</sup>		TFTM	Forward throw medium		347*	Shipped separately
	P13 <sup>1</sup>		T5V5	Type V very short <sup>1</sup>		480*	KMAB DDBXD Most arm mounting bracket adaptor (except finish) <sup>8</sup>

**Control options**

Shipped installed:  
NCAWZ Night-All-weather 2 enabled<sup>1,9</sup>  
PIRHN Infrared high/low motion/ambient sensor<sup>10</sup>  
PIR Infrared high/low motion/ambient sensor<sup>10</sup>  
PIRHCV High/low motion/ambient sensor, 8-15' mounting height, ambient sensor enabled at 16'<sup>10</sup>  
PER7 Seven-pin receptacle only (leads exit fixture) (control ordered separately)<sup>11</sup>  
DMG 0-100% dimming extend out back of housing for external control (control ordered separately)<sup>12</sup>

**Other options**

PIR High/low motion/ambient sensor, 8-15' mounting height, ambient sensor enabled at 16'<sup>10</sup>  
PIRHN High/low motion/ambient sensor, 15-30' mounting height, ambient sensor enabled at 16'<sup>10</sup>  
PIRHCV High/low motion/ambient sensor, 8-15' mounting height, ambient sensor enabled at 16'<sup>10</sup>  
PER7 High/low motion/ambient sensor, 15-30' mounting height, ambient sensor enabled at 16'<sup>10</sup>  
FAO Field adjustable output<sup>13</sup>

**Finish options**

Shipped installed:  
HS Frosted glass shield<sup>14</sup>  
SF Single face (130, 277, 347V)<sup>15</sup>  
DF Double face (208, 240, 480V)<sup>15</sup>  
L90 Left rotated optics<sup>1</sup>  
R90 Right rotated optics<sup>1</sup>  
DDK Diffused deep lens<sup>16</sup>  
NA 60°C ambient operation<sup>17</sup>  
BS Bird spikes<sup>18</sup>  
E65 External glare shield

DDBK Dark bronze  
DRBK Black  
DHALD Natural aluminum  
DWHWD White  
DDBKD Tinted dark bronze  
DDBDK Tinted dark  
DHALD Tinted natural aluminum  
DWHGX Tinted white

**LITHONIA LIGHTING** One Lithonia Way • Conyers, Georgia 30012 • Phone: 1-800-705-SERV (7378) • www.lithonia.com © 2011-2020 Acuity Brands Lighting, Inc. All rights reserved. DSX0 LED Rev. 11/06/20 Page 1 of 8

**Stark Designs ARCHITECTURE**

2411 Saint Andrews Dr.  
Rocklin, CA 95765  
916 300-2256  
t@starkdesigns.com

11214 B

DATE: 10-12-20

**PROPOSED SITE PLAN E0**

10555 Old Placerville Road  
Sacramento, CA 95827-2523  
Phone: (916) 368-4468  
**REGISTERED IN ALL 50 STATES**  
Job No. 20678

Date Signed: November 30, 2020

**ATKINSON SELF STORAGE AND RV/ BOAT**  
ROSEVILLE, California  
RDS, LLC